

TYPAR® FLASHING DETAILS

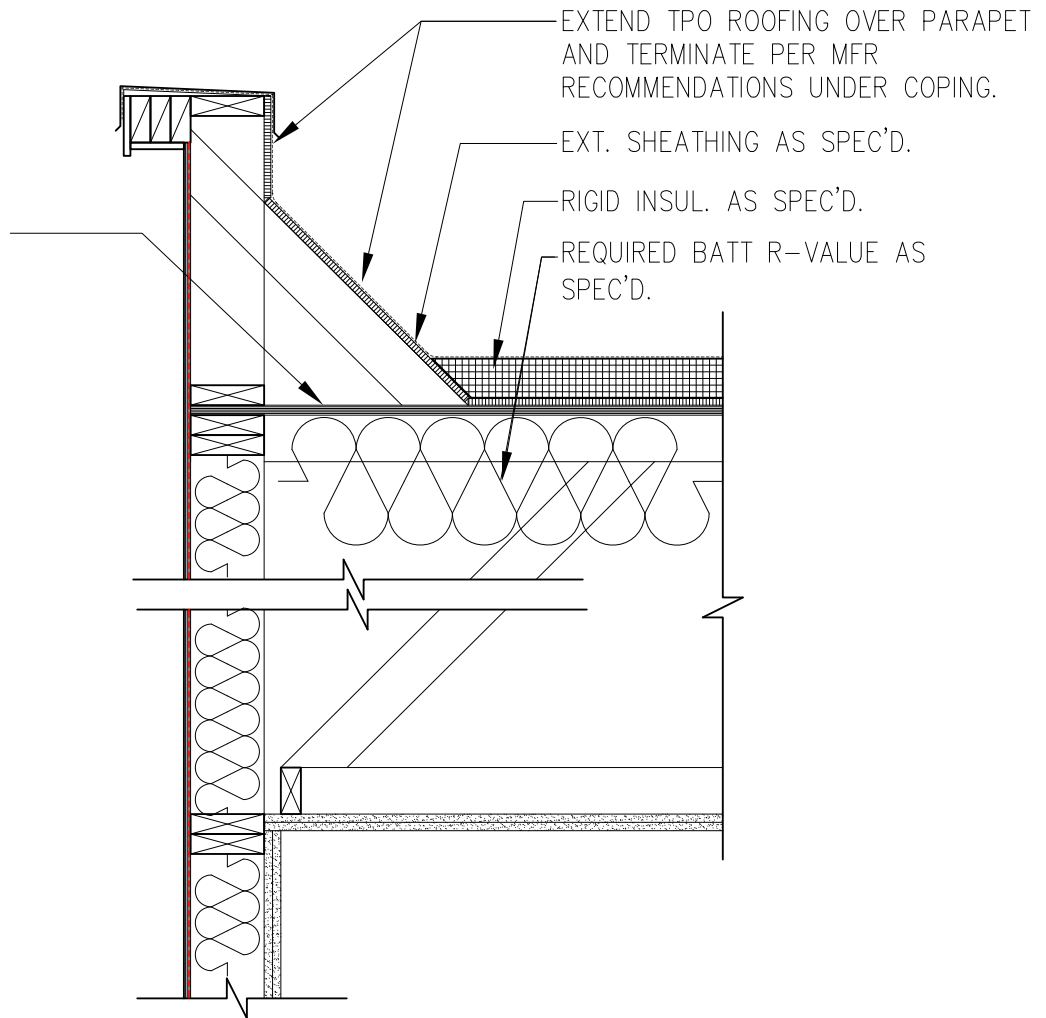
TABLE OF CONTENTS

Table of Contents	01
Detail 1: Overframed Parapet	02
Detail 2: Parapet.....	03
Detail 3: Concrete Soffit.....	04
Detail 4: Typical Slab Edge.....	05
Detail 5: Corner Plan.....	06
Detail 6: Section.....	07
Detail 7: Typical Foundation.....	08
Detail 8: Typical Sill.....	09
Detail 9: Typical Detail at Elevated Terrace.....	10
Detail 10: Typical Brick Vent.....	11
Detail 11: Typical Siding Vent.....	12
Detail 12: Typical Low-Slope Roof Transition.....	13

TYPAR® FLASHING DETAIL

DETAIL 1: OVERFRAMED PARAPET

AIR SEAL SHEATHING
INSIDE OF PARAPET
FRAMING WITH
APPROVED CAULK OR
TAPE AT ALL SEAMS.



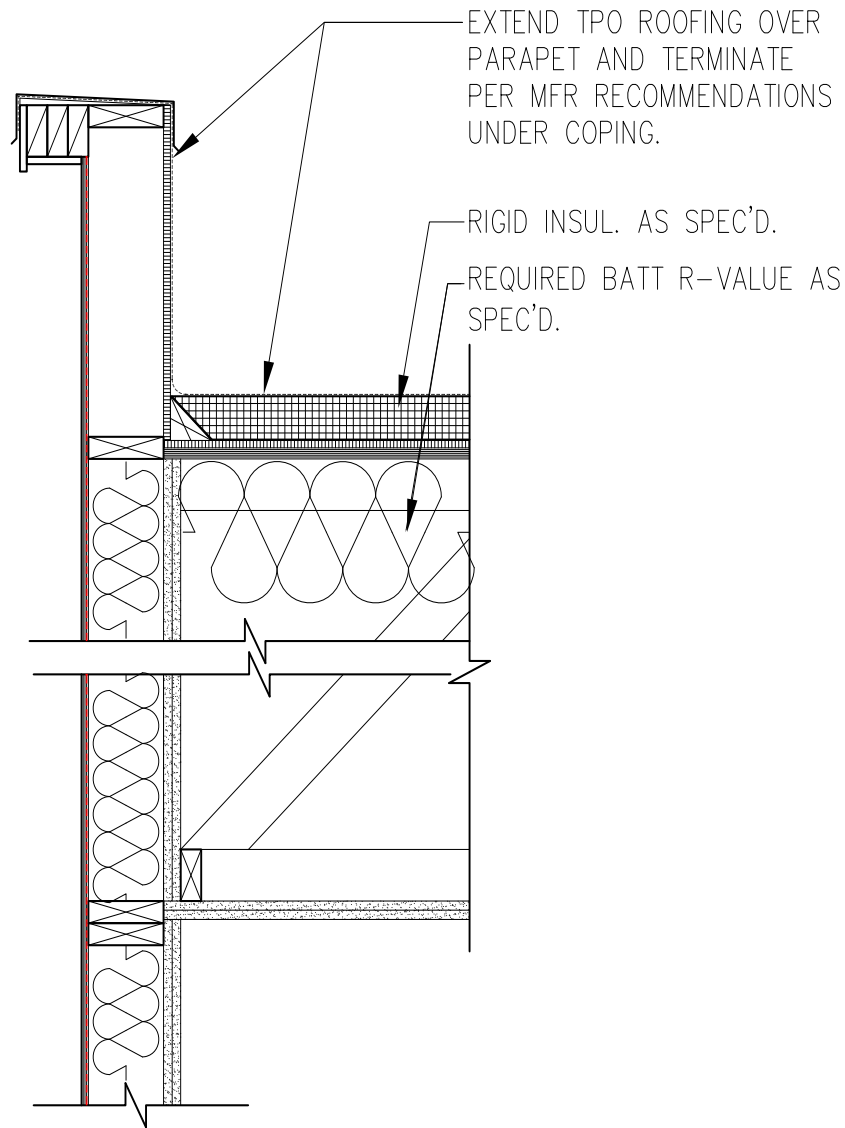
OVERFRAMED PARAPET DETAIL



2018 | Made in the USA of U.S. and global components.
Please visit TYPAR.com for installation instructions and warranty information.
Building Wraps | Flashings | Construction Tape

TYPAR® FLASHING DETAIL

DETAIL 2: PARAPET



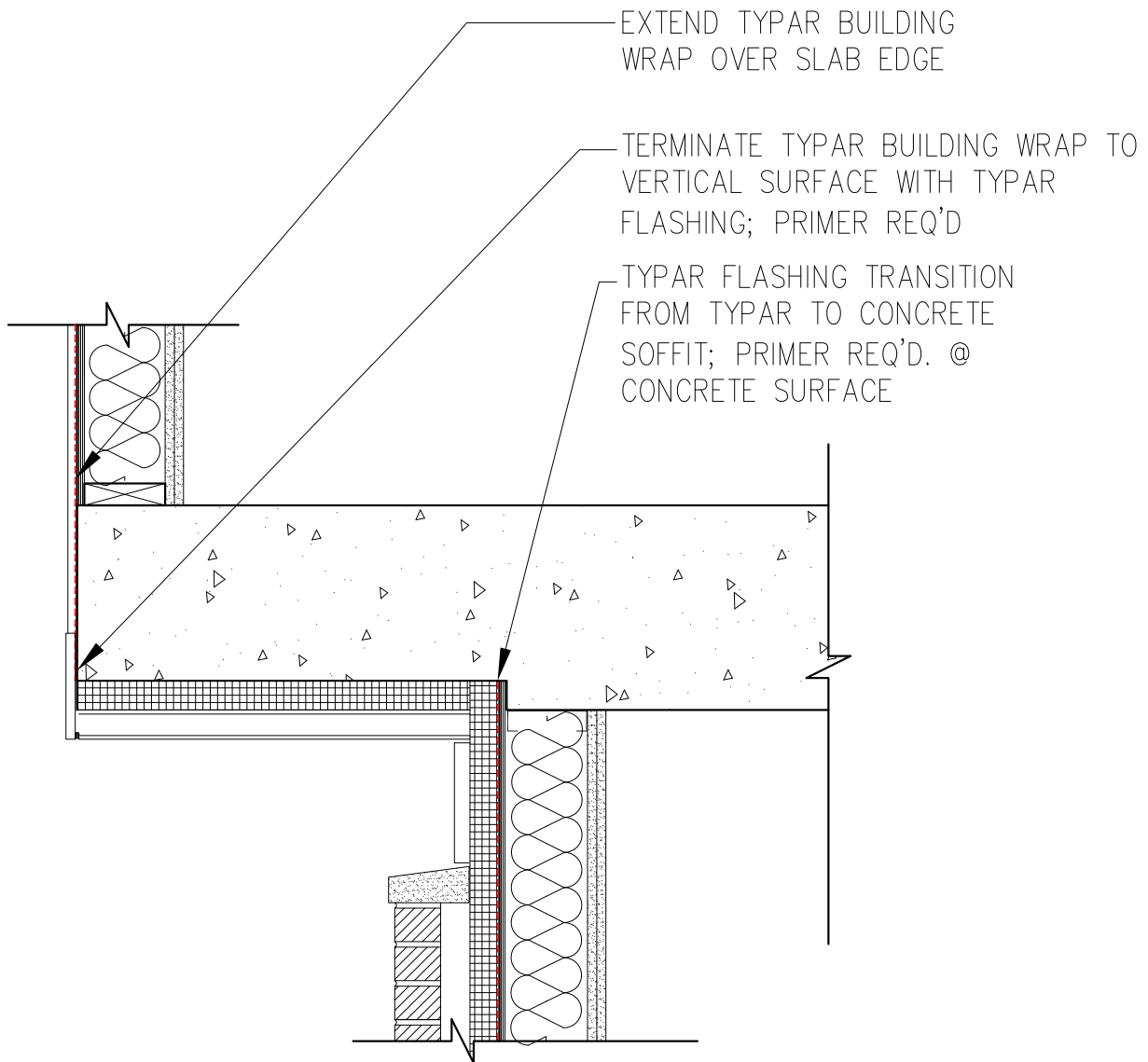
PARAPET DETAIL



2018 | Made in the USA of U.S. and global components.
Please visit TYPAR.com for installation instructions and warranty information.
Building Wraps | Flashings | Construction Tape

TYPAR® FLASHING DETAIL

DETAIL 3: CONCRETE SOFFIT



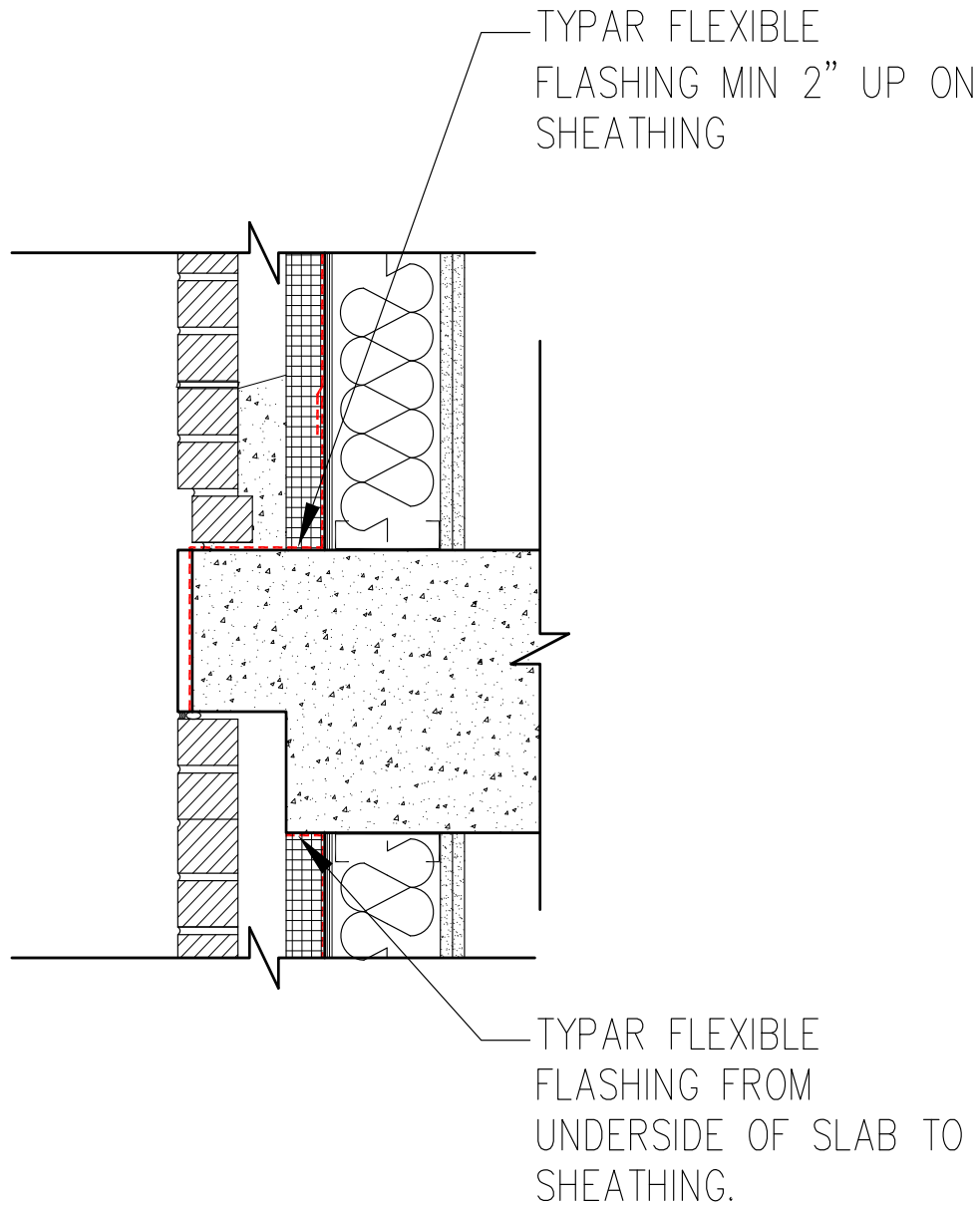
CONCRETE SOFFIT DETAIL



2018 | Made in the USA of U.S. and global components.
Please visit TYPAR.com for installation instructions and warranty information.
Building Wraps | Flashings | Construction Tape

TYPAR® FLASHING DETAIL

DETAIL 4: TYPICAL SLAB EDGE



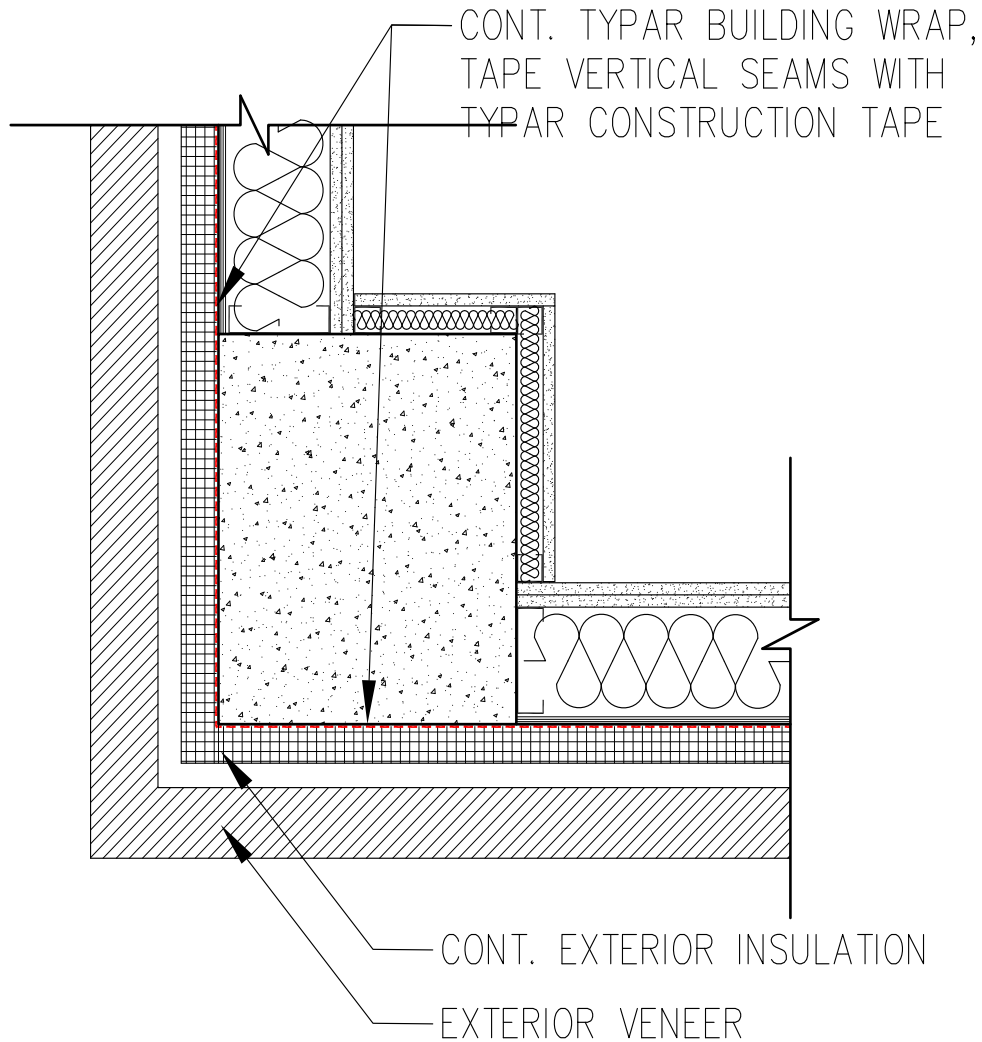
TYPICAL SLAB EDGE DETAIL



2018 | Made in the USA of U.S. and global components.
Please visit TYPAR.com for installation instructions and warranty information.
Building Wraps | Flashings | Construction Tape

TYPAR® FLASHING DETAIL

DETAIL 5: CORNER PLAN



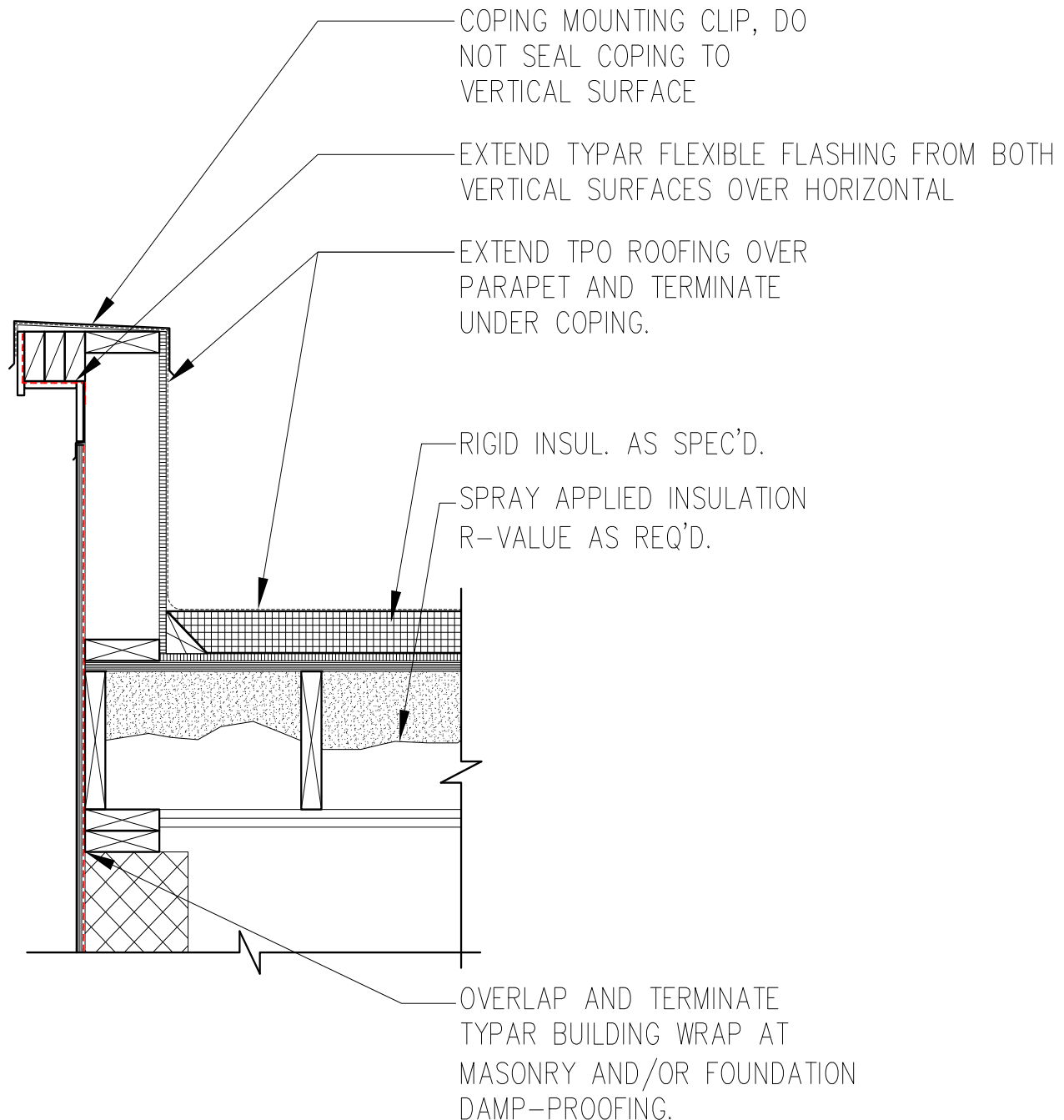
CORNER PLAN DETAIL



2018 | Made in the USA of U.S. and global components.
Please visit TYPAR.com for installation instructions and warranty information.
Building Wraps | Flashings | Construction Tape

TYPAR® FLASHING DETAIL

DETAIL 6: SECTION



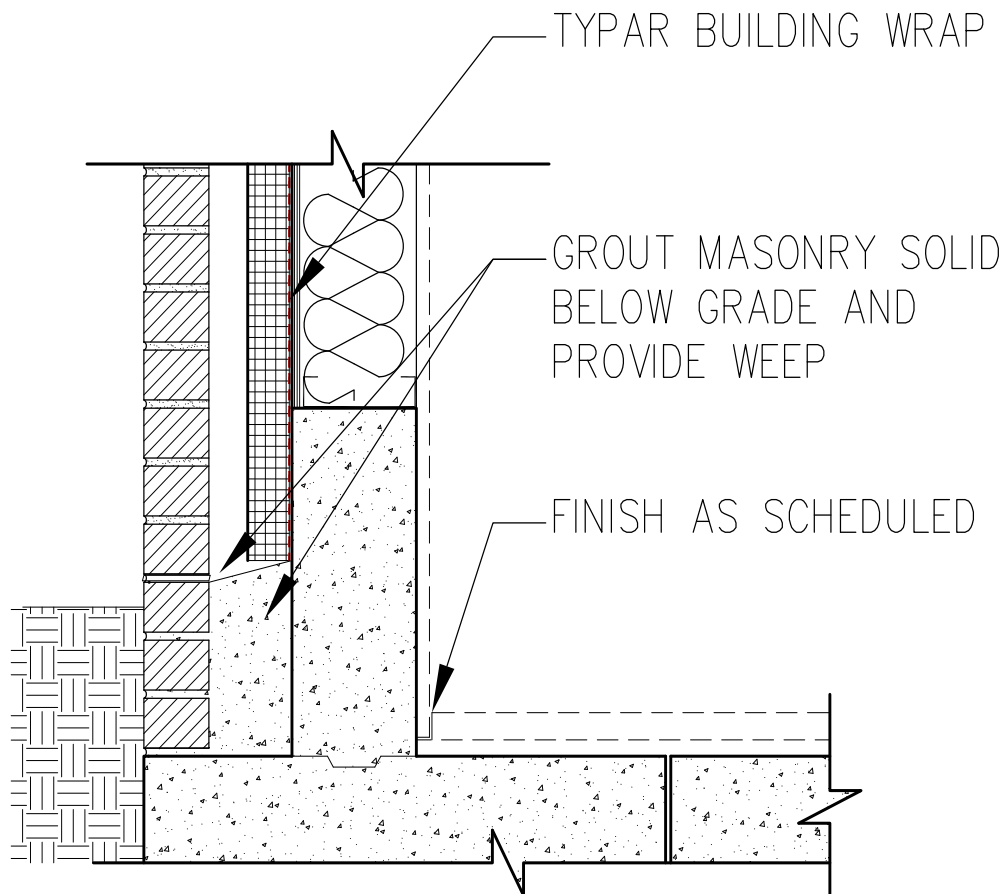
SECTION DETAIL



2018 | Made in the USA of U.S. and global components.
Please visit TYPAR.com for installation instructions and warranty information.
Building Wraps | Flashings | Construction Tape

TYPAR® FLASHING DETAIL

DETAIL 7: TYPICAL FOUNDATION



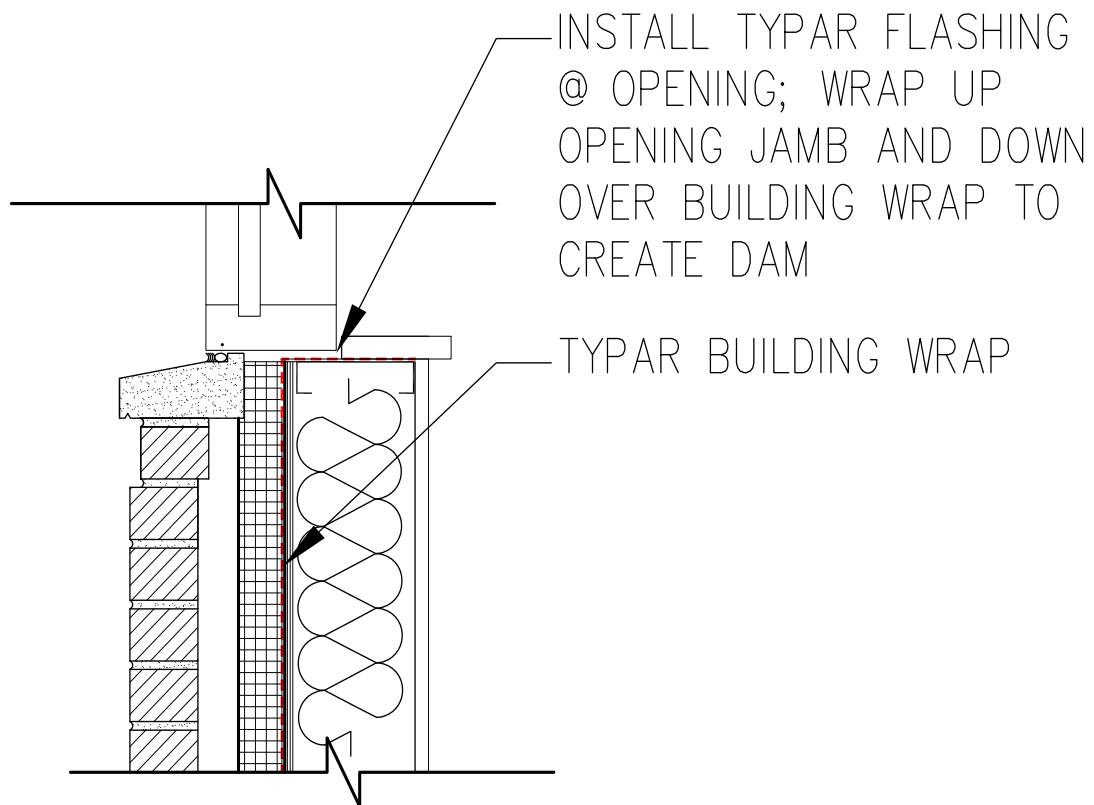
TYPICAL FOUNDATION DETAIL



2018 | Made in the USA of U.S. and global components.
Please visit TYPAR.com for installation instructions and warranty information.
Building Wraps | Flashings | Construction Tape

TYPAR® FLASHING DETAIL

DETAIL 8: TYPICAL SILL



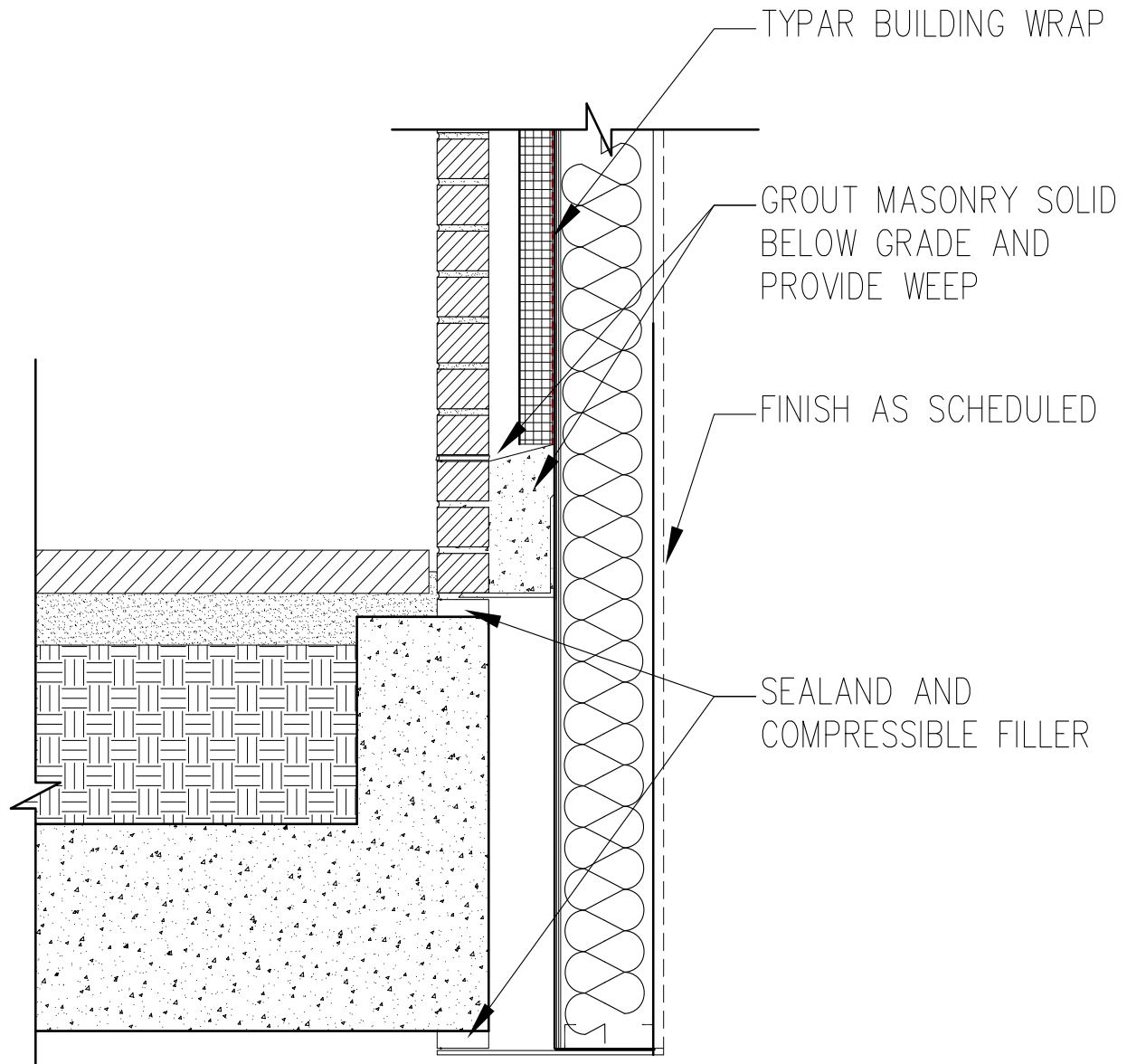
TYPICAL SILL DETAIL



2018 | Made in the USA of U.S. and global components.
Please visit TYPAR.com for installation instructions and warranty information.
Building Wraps | Flashings | Construction Tape

TYPAR® FLASHING DETAIL

DETAIL 9: TYPICAL DETAIL AT ELEVATED TERRACE



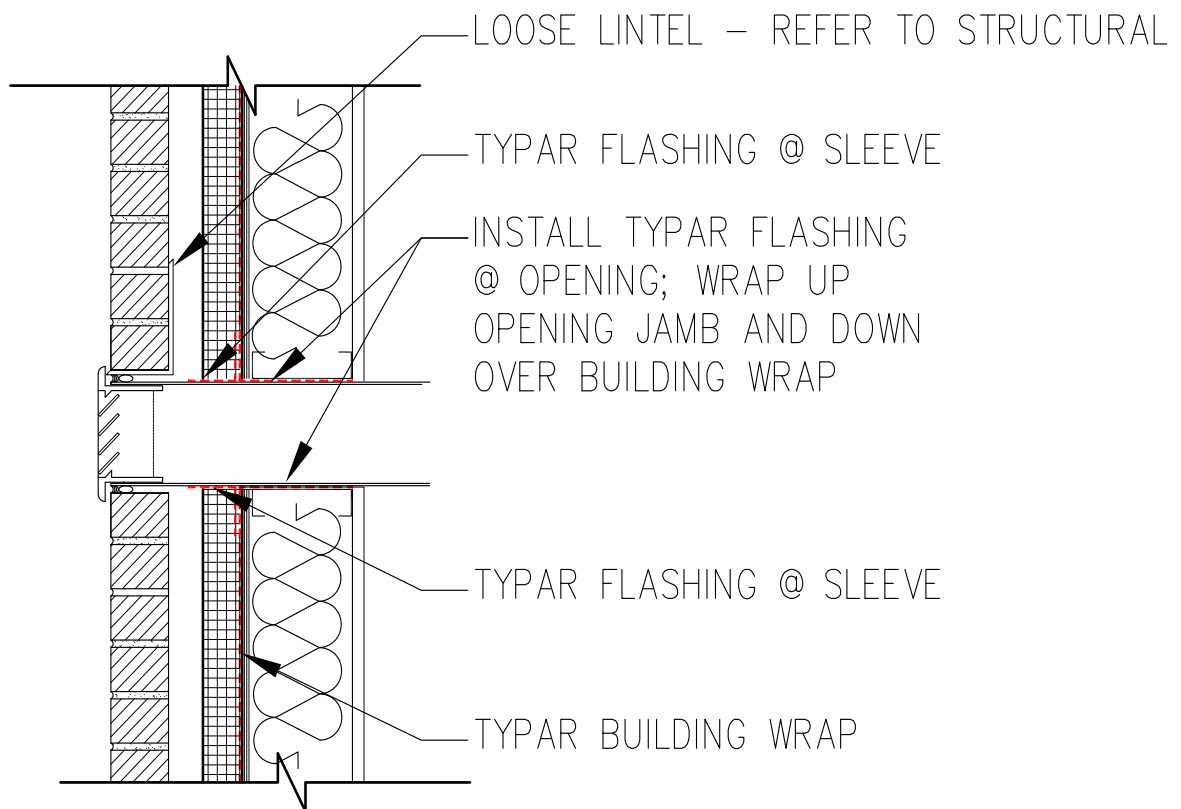
TYPICAL DETAIL @ ELEVATED TERRACE



2018 | Made in the USA of U.S. and global components.
Please visit TYPAR.com for installation instructions and warranty information.
Building Wraps | Flashings | Construction Tape

TYPAR® FLASHING DETAIL

DETAIL 10: TYPICAL BRICK VENT



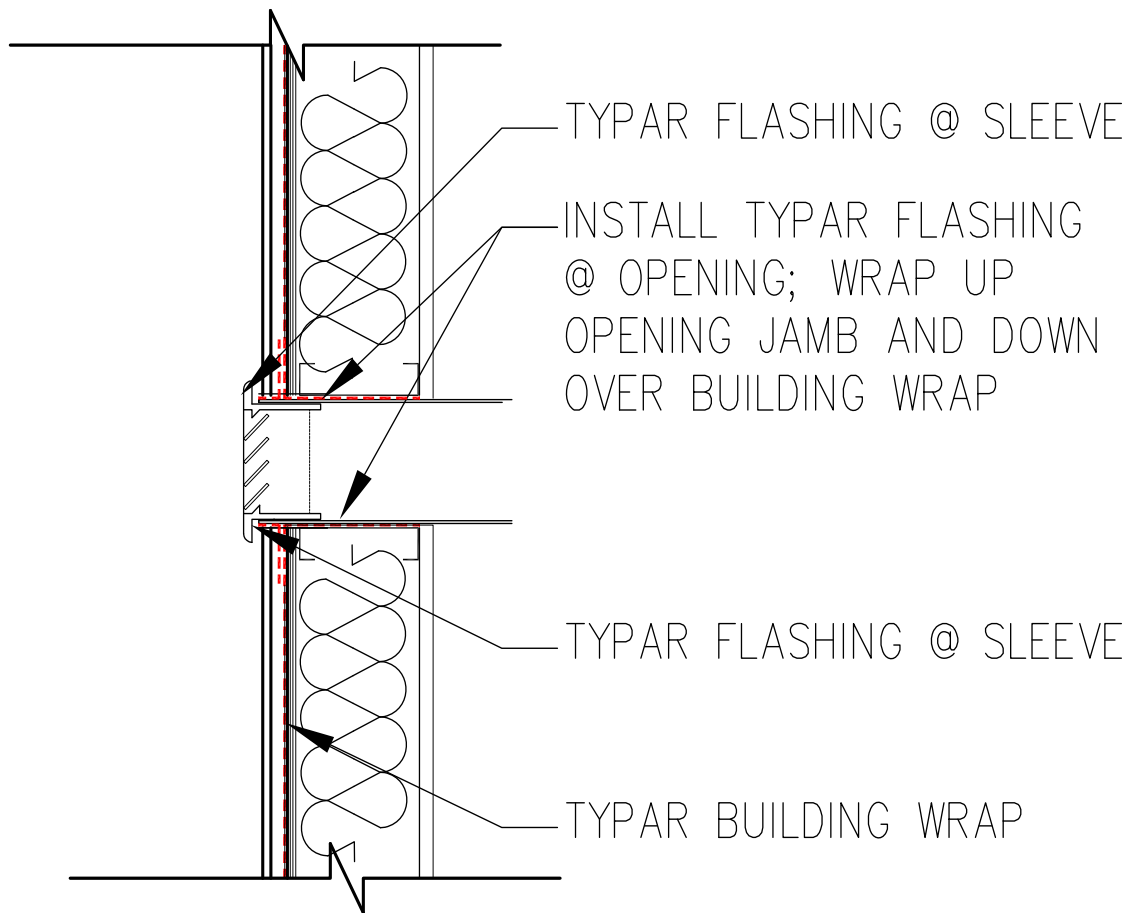
TYPICAL BRICK VENT DETAIL



2018 | Made in the USA of U.S. and global components.
Please visit TYPAR.com for installation instructions and warranty information.
Building Wraps | Flashings | Construction Tape

TYPAR® FLASHING DETAIL

DETAIL 11: TYPICAL SIDING VENT



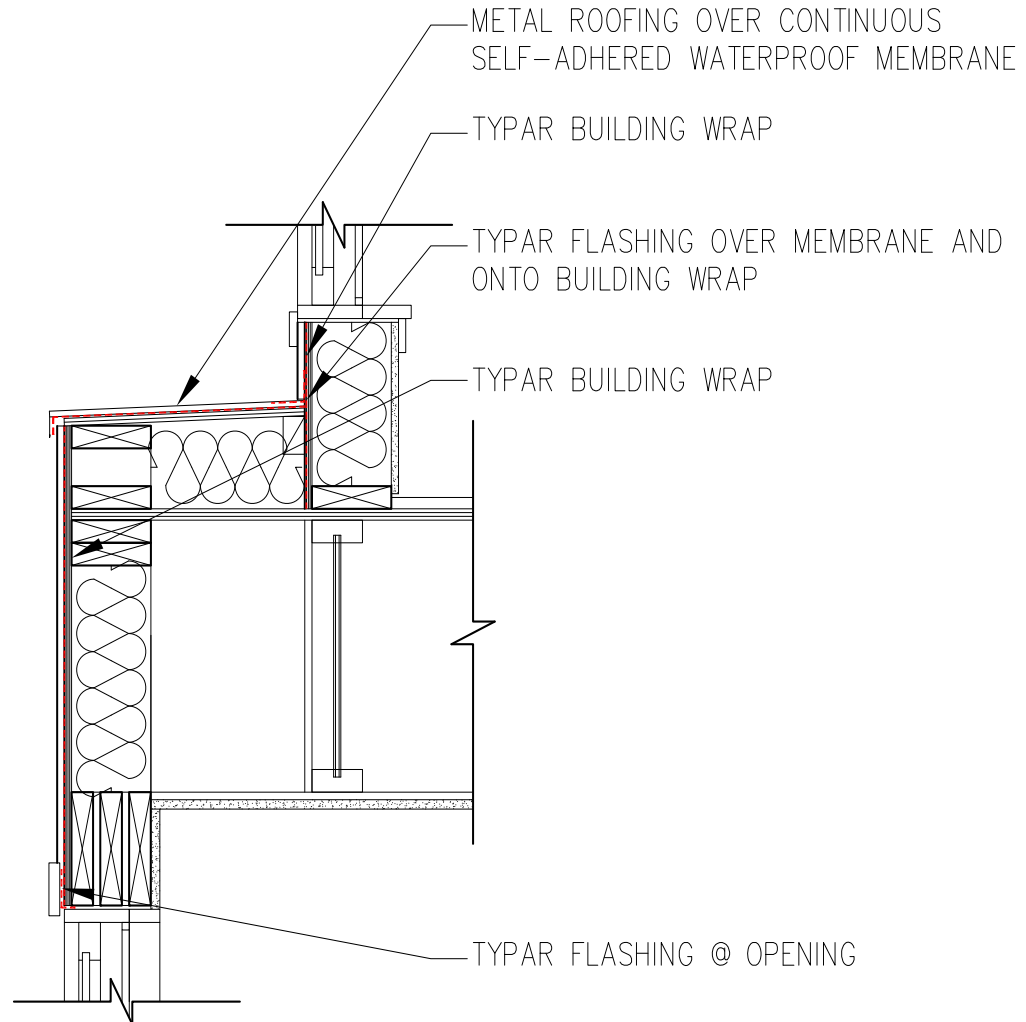
TYPICAL SIDING VENT DETAIL



2018 | Made in the USA of U.S. and global components.
Please visit TYPAR.com for installation instructions and warranty information.
Building Wraps | Flashings | Construction Tape

TYPAR® FLASHING DETAIL

DETAIL 12: TYPICAL LOW-SLOPE ROOF TRANSITION



TYPICAL LOW-SLOPE ROOF TRANSITION DETAIL



2018 | Made in the USA of U.S. and global components.
Please visit TYPAR.com for installation instructions and warranty information.
Building Wraps | Flashings | Construction Tape