

# TYPAR® WEATHER PROTECTION SYSTEM FOR COMMERCIAL STRUCTURES

## INTRODUCING THE TYPAR® COMMERCIAL PLAYBOOK!

Aimed specifically for General Contractors, Architects, Designers and Project Engineers, TYPAR®'s new Commercial playbook has everything you need, including install guides, sell sheets and relevant code and warranty information, to make your specification submittal process easy! We are looking forward to partnering with you on your next commercial project!



APPLICABLE PRODUCTS		
AIR AND WATER BARRIERS		
PRODUCT	DIMENSIONS	AREA
TYPAR® Commercial	5' x 150' 10' x 100'	750 ft <sup>2</sup> 1000 ft <sup>2</sup>
TYPAR® DrainableWrap™ Commercial	5' x 150'	750 ft <sup>2</sup>
INSTALLATION ACCESSORIES		
PRODUCT	DIMENSIONS	QUANTITY
TYPAR® Construction Tape	1-7/8" x 165' 3" x 165'	24 rolls/case 16 rolls/case
TYPAR® Double-Sided Seaming Tape	1-1/2" x 180'	20 rolls/case
SELF-ADHERED FLASHING PRODUCTS		
PRODUCT	ROLL SIZES	
TYPAR® Butyl Flashing	4" x 75', 6" x 75', 9" x 75', 12" x 75'	
TYPAR® All-Temperature Flashing	4" x 75', 6" x 75', 9" x 75', 12" x 75'	
TYPAR® Flexible Flashing	6" x 75', 9" x 75'	
TYPAR® Clear Acrylic Flashing	4" x 75', 6" x 75', 9" x 75', 12" x 75'	
ACCESSORIES		
A. Primer: Use 3M™ Super 77™, Polyken® spray adhesive, or equal.		
B. Seam Tape: TYPAR® Construction Tape or TYPAR® Double-Sided Seaming Tape		
C. Fastener: Fastener is dependent on substrate construction.		
D. Sealant: TYPAR® HD Heavy-Duty Sealant		

## WARRANTY

Please refer to TYPAR® Weather Protection System Limited Warranty\* (located online at [TYPAR.com/downloads](http://TYPAR.com/downloads) for full details). Magnera warrants to the Owner of a new structure four or more stories in height, for a period of 10 years from the date of purchase of the Products comprising the entire building envelope of such Structure, that the Products will perform according to published Specifications and Characteristics if installed in strict accordance with published Installation Instructions, accepted industry standards and applicable building codes in a properly designed and constructed wall system.

## CODES & STANDARDS

The products encompassing the TYPAR® Weather Protection System for Commercial construction, as outlined in "Applicable Products", have been tested to and are in accordance with the following standards:

- ABAA Evaluated
- ASTM E 2357 Standard Test Method for Determining Air Leakage of Air Barrier Assemblies
- ASTM E 1677 Standard Specification for an Air Retarder (AR) Material or System for Low-Rise Framed Building Walls
- ASTM D779 Standard Test Method for Determining the Water Vapor Resistance of Sheet Materials in Contact with Liquid Water by the Dry Indicator Method
- ASTM E 2178 Standard Test Method for Air Permeance of Building Materials
- ASTM E 2273 Standard Test Method for Determining the Drainage Efficiency of Exterior Insulation and Finish Systems (EIFS) Clad Wall Assemblies
- ASTM E 283 Standard Test Method for Determining Rate of Air Leakage Through Exterior Windows, Curtain Walls and Doors Under Specified Pressure Differences Across the Specimen
- ASTM E 84 Standard Test Method for Surface Burning Characteristics of Building Materials
- NFPA 285 Standard Fire Test Method for Evaluation of Fire Propagation Characteristics of Exterior Non-Load-Bearing Wall Assemblies Containing Combustible Components

All TYPAR® air and water barriers, installation accessories and self-adhered flashing products as outlined in the "Applicable Products" section are in accordance with the 2021 International Building Code (IBC) (Section 1402.2. Weather Protection).

# TYPAR® WEATHER PROTECTION SYSTEM INSTALLATION GUIDE

## FOR COMMERCIAL APPLICATIONS

### TABLE OF CONTENTS

Table of Contents .....	01
Objective .....	01
Functions .....	01
Substrate .....	02
Weather Conditions .....	02
Overlaps .....	02
Penetrations .....	03
Terminators .....	03
Fasteners .....	03
Fastening Requirements .....	03
Windows and Doors .....	03
Completing the Installation .....	03

### OBJECTIVE

The objective of these installation instructions for TYPAR® Commercial building wrap is to provide guidance to the design professional and to the installation contractor. TYPAR Commercial building wrap can provide the function of a water resistive barrier and the function of an air barrier in a commercial building when installed as an assembly.

Note: As commercial buildings vary significantly in design and height and are subject to different forces depending on where it is located, the design professional shall determine the loads on the material to determine the material is appropriate and usable for the intended use in a particular building. The design professional shall review these guidelines to determine if they are applicable to their specific project.

The design professional may use the model specification developed for TYPAR Commercial building wrap for additional guidance. This installation guide provides the basic requirements and does not cover all details which may be required for a specific building. Contact the manufacturer when more information is required.

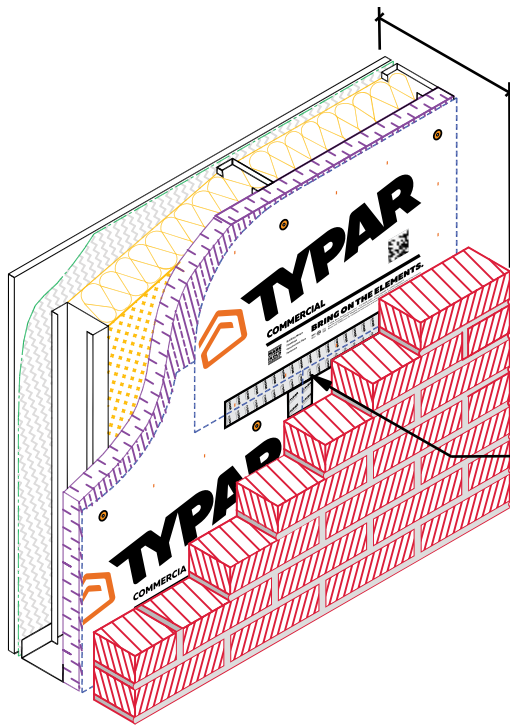
### FUNCTIONS

#### Water Resistive Barrier Function

TYPAR Commercial building wrap has been designed to shed the liquid water which passes through the cladding when installed as a water resistive barrier assembly. Additional materials and components shall be used to work with the TYPAR Commercial building wrap to direct the water to the exterior of the building enclosure.

#### Air Barrier Assembly

TYPAR Commercial building wrap has been designed to reduce the air infiltration and exfiltration through the walls of the building. The material has an air permeance rate well below the maximum allowed air permeance rate to be classified as an air barrier material. Additional materials and components shall be used to seal the TYPAR Commercial building wrap to penetrations and to terminate the material at the roof intersection and at the foundation. Both the design professional and the installer have to keep in mind that the force on the material will be in both directions (positive and negative). This load must still be transferred to substrate. Therefore, the fastener type and spacing are very important.



**TYPICAL WALL  
MASONRY VENEER**  
1" AIR SPACE TYPAR® COMMERCIAL BUILDING WRAP  
RIGID INSULATION STEEL STUDS w/BATT INSULATION  
VAPOR RETARDER GYPSUM BOARD

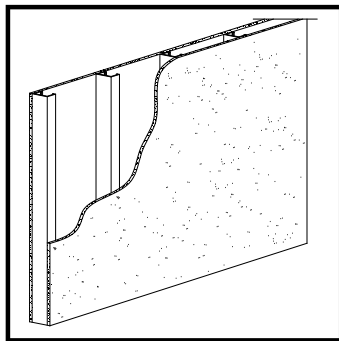
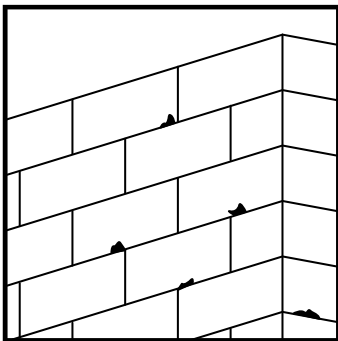
LAP AND TAPE TYPAR®  
AT JOINTS

**TYPICAL WALL ISOMETRIC**  
COMMERCIAL STEEL FRAME STRUCTURE w/MASONRY VENEER

**INSTALLATION GUIDELINES**

**Substrate**

TYPAR Commercial building wrap can be installed over any substrate. The installer shall check for any sharp protrusions on the substrate. These protrusions shall be removed so that the TYPAR Commercial building wrap is not penetrated. The material must be intact to keep the water and air out. The substrate on the building will determine what fasteners will be used.

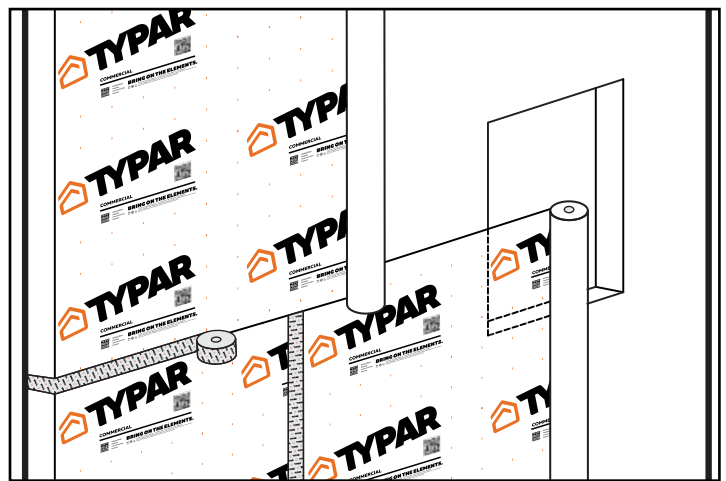


**Weather Conditions**

Temperature does not impact the installation procedure. High winds can affect installation as TYPAR Commercial building wrap will be installed in large sheets. TYPAR Commercial building wrap should not be installed when it is raining or before the substrate has dried after a rain.

**Overlaps**

TYPAR Commercial building wrap and all other materials and components used as part of the installation are to be installed in a shingle fashion, the material or component above must overlap the material or component below it. The overlap shall be 4 inches (101mm) horizontally and 6 inches (152mm) vertically everywhere this is possible. TYPAR® Construction Tape is then installed on every seam and each termination. \*TYPAR Commercial building wrap can also be installed vertically. This allows a single length to start at the top and continue to the bottom. The 6 inches (152mm) vertical overlap is required. All corners are to be overlapped 12 inches (304mm).



\*For ASTM 2357 compliance and ABAA certification, use of TYPAR Double-Sided tape on the seams is required. Use TYPAR Doubled Sided Seaming Tape to seam two overlapped rolls. TYPAR® Double Sided Seaming Tape should first be applied on the top edge of the TYPAR Commercial building wrap within 6". The second layer of TYPAR Commercial building wrap should then be applied on top of the first.

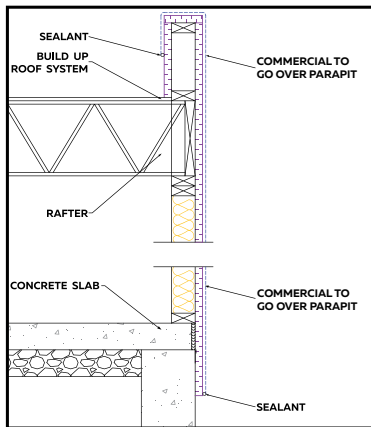


**Penetrations**

TYPAR® Commercial building wrap must be carefully cut around penetrations. A bead of TYPAR HD Heavy-Duty sealant is then installed on the substrate, approximately 1 inch (2.5cm) back from the edge of the cut. The TYPAR Commercial building wrap is then pressed into the sealant to keep out both water and air. TYPAR® Flexible Flashing or TYPAR straight flashing is then installed on the exterior of the TYPAR Commercial building wrap and joins the material to the penetration. For more detailed information, refer to the TYPAR Installation Manual.

**Terminations**

Terminations are treated similar to penetrations. A bead of TYPAR HD Heavy-Duty sealant is installed on the substrate approximately 1 to 2 inches (25 to 50mm) back from the edge of the TYPAR Commercial building wrap. The TYPAR Commercial building wrap is pressed into the TYPAR sealant. In high wind locations, consider installing a furring strip where the material is terminated to provide additional structural support.

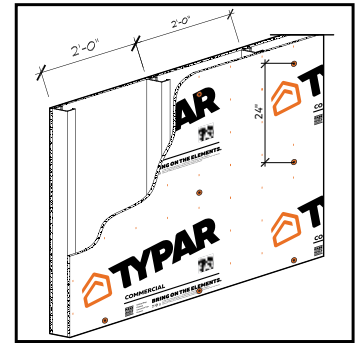
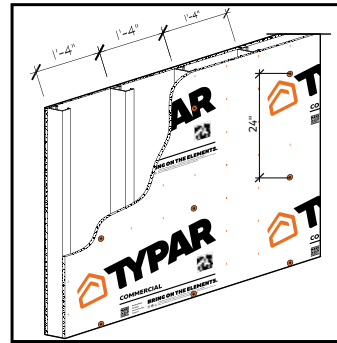


**Fasteners**

Different fasteners would be used if the substrate is poured concrete, concrete block, steel stud, and gypsum board or wood framing. The most common walls used in commercial buildings are either steel studs with a treated gypsum board or wood framing with OSB sheathing. The fastener shall penetrate the substrate by 2 inches (50 mm) and shall have a 1 inch (50 mm) plastic head. When steel studs are used, the fasteners shall be self tapping screws with a 7/8 inch (50 mm) plastic washer. The screw shall be 2 inches (50 mm) long when 1/2 inch (12 mm) gypsum board is used. When wood studs are used, a 1 inch (50 mm) plastic headed nail or screw shall be used which is 2 inches (50 mm) long when the 1/2 inch (12 mm) OSB sheathing is used, or a 1 inch plastic cap staple with leg length to penetrate at least 5/8 inch into the wood stud can be used. When the substrate is concrete block or poured concrete, use an adhesive approved by the manufacturer to adhere the TYPAR Commercial building wrap to the substrate.

**Fastening Requirements**

Attach one fastener or more every 24 inches (601 mm) in horizontal and vertical direction.



**Windows and Doors**

Windows and doors are similar to penetrations. Depending on whether the windows are installed or not installed before the TYPAR Commercial building wrap is installed, the installer will follow AAMA Procedure A or Procedure B. The installer shall always install the materials and components, so that the product above overlaps the product below. For more detailed information, refer to the TYPAR Installation Manual.

**Completing the Installation**

When one section or wall is complete, the installer shall visually inspect the installation and check to see if all rows of material have overlapped the row below it, that all materials and components have been installed in a shingle fashion, that the fasteners are the proper ones, that the nailing pattern is correct, that all penetrations and terminations have been done correctly and that doors and windows have been properly flashed and integrated into the TYPAR Commercial building wrap material. The installer shall repair any cuts or tears with TYPAR® Construction Tape.

Disclaimer: This guideline document provides general guidance only for the installation of TYPAR® Commercial building wrap on commercial buildings. The design professional or builder shall consider all of the physical properties of the material and design the installation requirements to suit specific building requirements. Failure to consider all specific requirements for a building may lead to improper use of the material resulting in non-optimum performance of the material.



# TYPAR® DRAINABLEWRAP™ COMMERCIAL INSTALLATION GUIDE

## FOR COMMERCIAL APPLICATIONS

### TABLE OF CONTENTS

Table of Contents .....	01
Objective .....	01
Functions .....	01
Substrate .....	02
Weather Conditions .....	02
Overlaps .....	02
Penetrations .....	03
Terminators .....	03
Fasteners .....	03
Fastening Requirements .....	03
Windows and Doors .....	03
Completing the Installation .....	03

### OBJECTIVE

The objective of these installation instructions for TYPAR® DrainableWrap™ Commercial is to provide guidance to the design professional and to the installation contractor. TYPAR DrainableWrap Commercial can provide the function of a water resistive barrier and the function of an air barrier in a commercial building when installed as an assembly.

Note: As commercial buildings vary significantly in design and height and are subject to different forces depending on location, the design professional shall determine the number of material loads needed for the project and review the guidelines in this document to ensure they are applicable to their specific project.

This guide provides only the basic installation requirements for TYPAR DrainableWrap Commercial and does not provide all details which may be required for a specific building. For additional guidance, design professionals may reference the TYPAR model specification guide or contact the manufacturer.

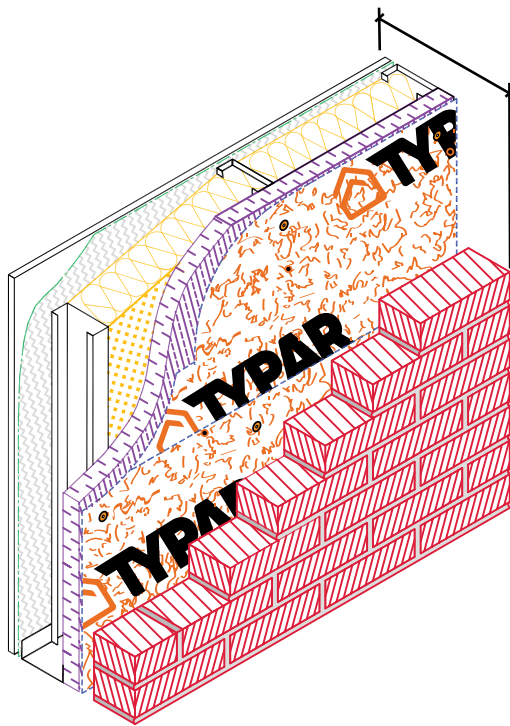
### FUNCTIONS

#### Water Resistive Barrier Function

TYPAR DrainableWrap Commercial has been designed to shed the liquid water which passes through the cladding when installed as a water resistive barrier assembly. Additional materials and components shall be used to work with the TYPAR DrainableWrap Commercial to direct the water to the exterior of the building enclosure.

#### Air Barrier Assembly

Designed with an air permeance rate well below the maximum level required for classification as an air barrier material, TYPAR significantly reduces air infiltration and exfiltration through the walls of your building. Additional materials and components shall be used to seal the TYPAR DrainableWrap Commercial to penetrations and to terminate the material at the roof intersection and at the foundation. Both the design professional and the installer have to keep in mind that the force on the material will be in both directions (positive and negative). This load must still be transferred to the substrate. Therefore, the fastener type and spacing are very important.



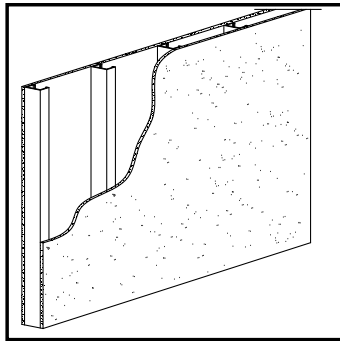
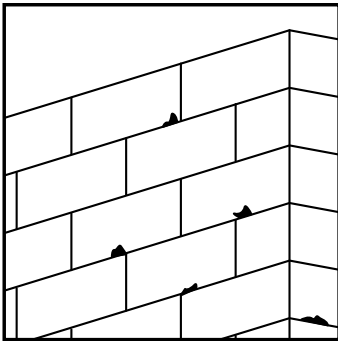
**TYPICAL WALL MASONRY VENEER**  
 1" AIR SPACE TYPAR® METROWRAP RIGID INSULATION  
 STEEL STUDS w/BATT INSULATION VAPOR RETARDER  
 GYPSUM BOARD

**TYPICAL WALL ISOMETRIC**  
 COMMERCIAL STEEL FRAME STRUCTURE w/MASONRY VENEER

**INSTALLATION GUIDELINES**

**Substrate**

TYPAR DrainableWrap Commercial can be installed over any substrate. Installers shall check for any sharp protrusions on the substrate and remove them to avoid penetrating the TYPAR DrainableWrap Commercial. The material must be intact to keep the water and air out.

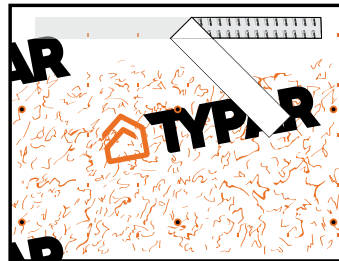


**Weather Conditions**

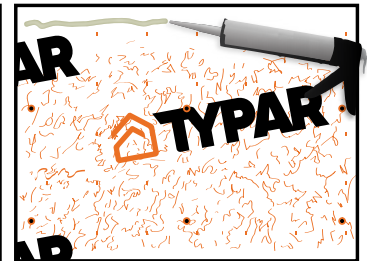
Temperature does not impact the installation procedure. High winds can affect installation as TYPAR DrainableWrap Commercial will be installed in large sheets. TYPAR DrainableWrap Commercial should not be installed when it is raining or before the substrate has dried after a rain.

**Overlaps**

TYPAR DrainableWrap Commercial and all other materials and components used as part of the installation are to be installed in a shingle fashion, the material or component above must overlap the material or component below it. The overlap shall be 6 inches (101 mm) both horizontally and vertically where possible. TYPAR DrainableWrap Commercial allows for either TYPAR Doubled Sided Seaming Tape or any polyurethane based caulking sealant to seam two overlapped rolls. When using TYPAR® Double Sided Seaming Tape, the tape should first be applied on the top edge of the TYPAR DrainableWrap Commercial within 6". The second layer of TYPAR DrainableWrap Commercial should then be applied on top of the first. When using any polyurethane-based caulking sealant, ensure a continuous bead of sealant is applied to top edge of the TYPAR DrainableWrap Commercial within 6" and then apply the second layer of TYPAR DrainableWrap Commercial on top of the first. Use of TYPAR® Construction Tape on horizontal and vertical seams is optional and not required for full warranty coverage under the TYPAR Weather Protection System Limited Lifetime Warranty.



**Option 1:** TYPAR Double Sided Tape



**Option 2:** Any Polyurethane-Based Caulking Sealant

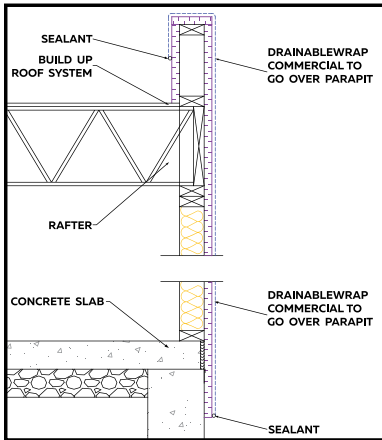


**Penetrations**

TYPAR® DrainableWrap Commercial must be carefully cut around penetrations. A bead of approved sealant is then installed on the substrate, approximately 1 inch (2.5 cm) back from the edge of the cut. The TYPAR DrainableWrap Commercial is then pressed into the sealant to keep out both water and air. TYPAR® Flexible Flashing or TYPAR straight flashing is then installed on the exterior of the TYPAR DrainableWrap Commercial, joining the material to the penetration. For more detailed information, refer to the TYPAR Installation Manual.

**Terminations**

Terminations are treated similar to penetrations. A bead of approved sealant is installed on the substrate approximately 1 to 2 inches (25 to 50 mm) back from the edge of the TYPAR DrainableWrap Commercial. The TYPAR DrainableWrap Commercial is pressed into the approved sealant. In high wind locations, consider installing a furring strip where the material is terminated to provide additional structural support.



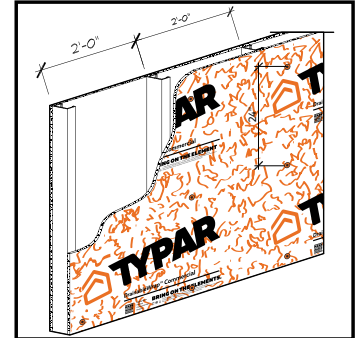
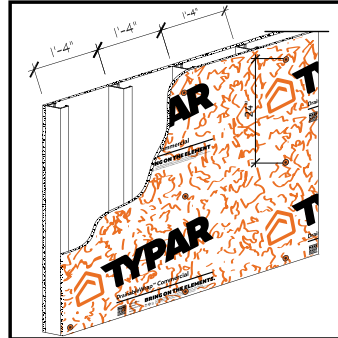
**Fasteners**

Different fasteners shall be used depending on the substrate poured (concrete, concrete block, steel stud, gypsum board, or wood). The most common walls used in commercial buildings are either steel studs with a treated gypsum board or wood framing with OSB sheathing. The fastener shall penetrate the substrate by 2 inches (50 mm) and shall have a 2 inch (50 mm) plastic head. When steel studs are used, the fasteners shall be self tapping screws with a 2 inch (50 mm) plastic washer. The screw shall

be 2 inches (50 mm) long when ½ inch (12 mm) gypsum board is used. When wood studs are used, a 2 inch (50 mm) plastic headed nail or screw shall be used which is 2 inches (50 mm) long when the ½ inch (12 mm) OSB sheathing is used. When the substrate is concrete block or poured concrete, use an adhesive approved by the manufacturer to adhere the TYPAR DrainableWrap Commercial to the substrate.

**Fastening Requirements**

Attach one fastener or more every 24 inches in horizontal and vertical direction.



**Windows and Doors**

Windows and doors are similar to penetrations. Installers will follow AAMA Procedure A or B depending on whether or not windows were installed prior to the installation of TYPAR DrainableWrap Commercial.

**Completing the Installation**

Once one section or wall is complete, the installer should inspect the installation to ensure the following:

- All rows of material are overlapping the row below
- All materials and components have been installed in a shingle fashion
- The proper fasteners are used
- Nailing patterns are correct
- Penetrations and terminations are correct
- Doors and windows have been properly flashed and integrated into the TYPAR DrainableWrap Commercial material

Disclaimer: This guideline document provides general guidance only for the installation of TYPAR® DrainableWrap Commercial on commercial buildings. The design professional or builder shall consider all of the physical properties of the material and design the installation requirements to suit specific building requirements. Failure to consider all specific requirements for a building may lead to improper use of the material, resulting in non-optimum performance of the material.

