

TYPAR® LIQUID FLASHING INSTALLATION GUIDE

DISCLAIMER

TYPAR® Liquid Flashing is meant to be applied directly to the rough opening before TYPAR® WRB is installed. Do not install TYPAR Liquid Flashing over the TYPAR WRB, as adhesion and seal will be impacted. TYPAR Liquid Flashing is an approved alternative to TYPAR® self-adhered flashing tapes, but proper installation techniques must be strictly followed to ensure coverage under the TYPAR® Lifetime Limited System Warranty.*

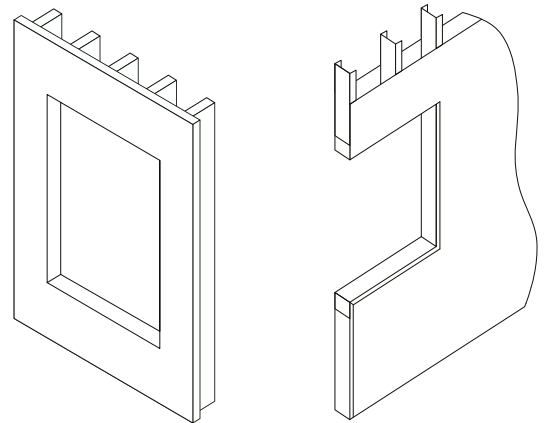
ROUGH OPENING INSTALLATION

OPTION 1: FULL WINDOW ROUGH OPENING

STEP 1

Inspect rough opening and ensure it is smooth, clean, and dry. Remove all visible contaminants and debris. Tap in any protruding nails and fill any gaps with TYPAR Liquid Flashing and let set.

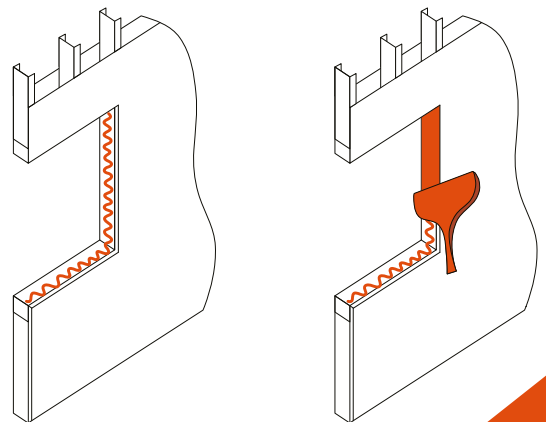
Rough
Opening
Cleaned



STEP 2

Starting at the top of the rough opening, apply a bead of TYPAR Liquid Flashing in the rough opening to be sealed and spread the material using a trowel, putty knife, or other spreader tool across the rough opening surface at an even consistency.

Liquid Flashing
Applied to
Rough Opening



Test the thickness of the material and ensure that it has a thickness of 12-15 mils using a wet mil gauge.

TYPAR® LIQUID FLASHING - INSTALLATION GUIDE

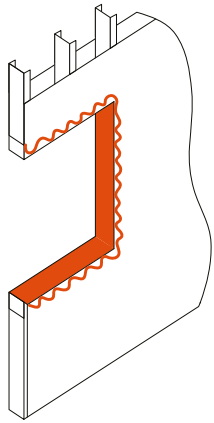
STEP 3

Apply a thick bead of TYPAR® Liquid Flashing to the vertical surface around the rough opening.

Spread using a trowel, putty knife, or other spreader tool across and into the rough opening surface, integrating with previous applied Liquid Flashing, at an even consistency.

Test with wet mil gauge and ensure 12-15 mil thickness is achieved. Ensure at least a 4" overlap with gypsum board or WRB around entire rough opening.

Liquid Flashing Applied Around Perimeter of Rough Opening



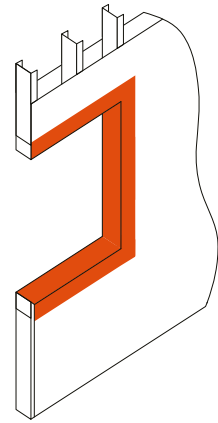
STEP 4

Allow TYPAR Liquid Flashing to cure and dry before installation of windows and rest of wall assembly, including TYPAR® WRB or other air barrier.

Check TYPAR Liquid Flashing rough opening installation to ensure it is free from pinholes or voids. Cover any pinholes or voids with TYPAR Liquid Flashing, as needed.

Follow manufacturer's installation instructions for proper installation of windows, WRB, and air barrier, as needed.

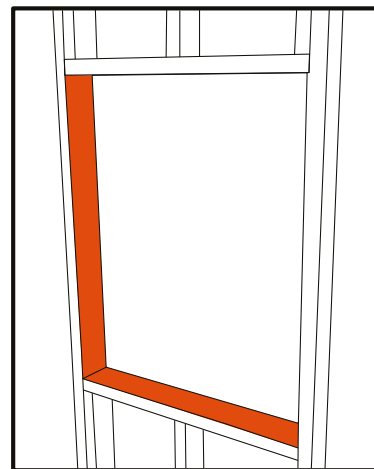
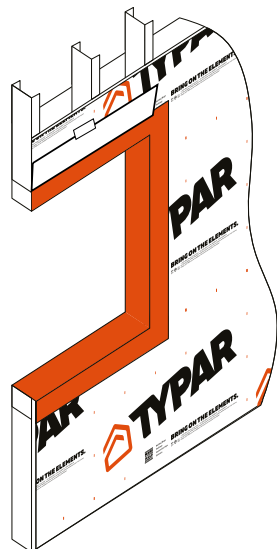
Liquid Flashing Cured



STEP 5

Install TYPAR WRB over an approved exterior sheathing, and cut flush with outside perimeter of Liquid Flashing around all four sides of rough opening. Be sure that the Liquid Flashing is not cut or penetrated during this process. This should be 4" on each side of the rough opening.

WRB Installed Over Liquid Flashing



Inside View of WRB Over Liquid Flashing



TYPAR® LIQUID FLASHING - INSTALLATION GUIDE

STEP 6

Once TYPAR® Liquid Flashing has cured and before installing window, apply a continuous bead of TYPAR® HD Sealant to interior window's mounting flange. Install window per manufacturer's instructions.



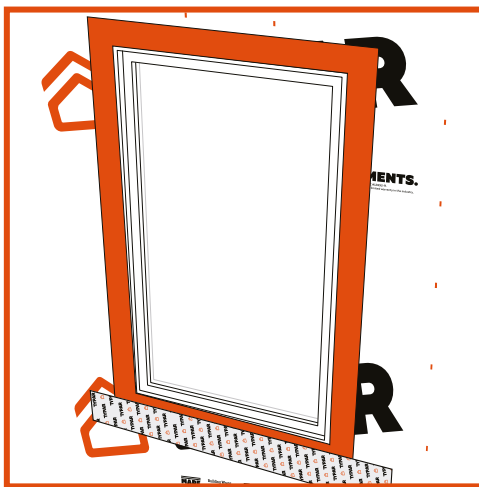
TYPAR HD Sealant Applied Around Perimeter of Rough Opening on WRB



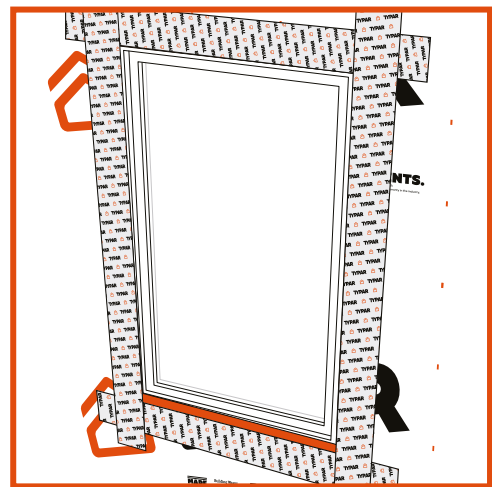
Window Set

STEP 7

Flash the jambs using TYPAR® Flashing (Clear Acrylic, All-Temperature, or Butyl). Apply flashing tape beneath the window sill flange, leaving a 1" gap of exposed liquid flashing between the flange and flashing. Cut two pieces of TYPAR Flashing long enough to extend 1" above the window head flange and 1" below the window sill flange. Carefully peel off the release liner and apply the flashing on both sides of the window. The flashing tape pieces should cover the window flange, liquid flashing, and overlap with the WRB. It is recommended to use the 6" wide flashing products to achieve adequate overlap and coverage to the WRB. Flash the window head flange on either side with TYPAR Flashing, ensuring that flashing is cut 12" longer than the window head rough opening and runs at least 6" onto TYPAR Flashing along the jambs.



Sill Flashing Applied

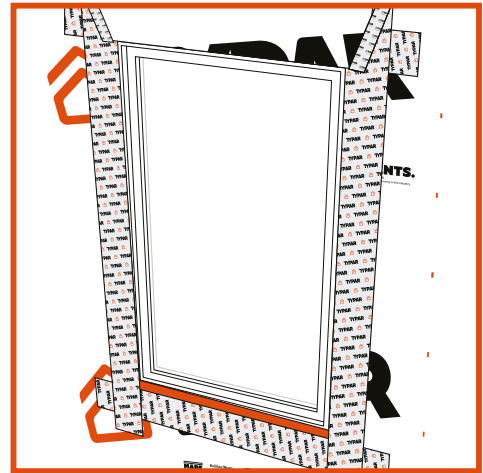


Jamb & Head Flashing Applied



STEP 8

Release the upper flap of the TYPAR® WRB that you cut earlier. Tape cuts using TYPAR® Construction Tape or Flashing. DO NOT tape the WRB along the top of the window flange.



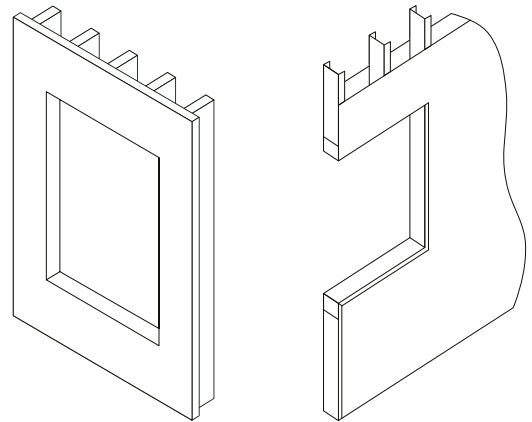
ROUGH OPENING INSTALLATION

OPTION 2: WINDOW SILL/JAMBS ONLY, ALTERNATIVE TO FLEXIBLE FLASHING

STEP 1

Inspect rough opening and ensure it is smooth, clean, and dry. Remove all visible contaminants and debris. Tap in any protruding nails and fill any gaps with TYPAR® Liquid Flashing and let set.

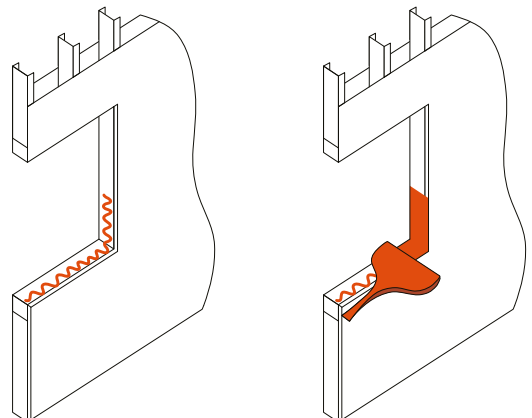
Rough
Opening
Cleaned



STEP 2

Starting at the bottom of the rough opening, apply a bead of TYPAR Liquid Flashing in the rough opening to be sealed, and spread the material using a trowel, putty knife, or other spreader tool across the rough opening surface at an even consistency. Apply Liquid Flashing 6" up the jambs on either side of the window and across the entirety of the sill. For this installation, Liquid Flashing will replace TYPAR® Flexible Flashing used to protect the sill.

Liquid Flashing
Applied to Rough
Opening



Test the thickness of the material and ensure that it has a thickness of 12-15 mils using a wet mil gauge.



TYPAR® LIQUID FLASHING - INSTALLATION GUIDE

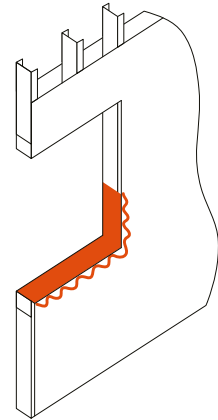
STEP 3

Apply a thick bead of TYPAR® Liquid Flashing to the vertical surface around the rough opening across sill and up 6" on the jambs. Do not apply Liquid Flashing across the top of the window head or upper 6" of jambs; installation should mimic Liquid Flashing installation from Step 2 for perimeter of rough opening.

Spread using a trowel, putty knife, or other spreader tool across and into the rough opening surface, integrating with previously applied Liquid Flashing, at an even consistency.

Test with wet mil gauge and ensure 12-15 mil thickness is achieved. Ensure at least a 4" overlap with gypsum board or WRB around entire rough opening.

Liquid Flashing Applied Around Bottom of Rough Opening



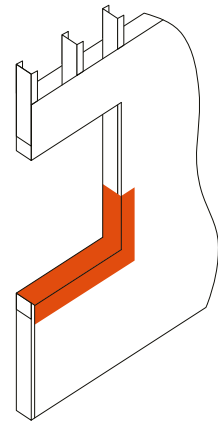
STEP 4

Allow TYPAR Liquid Flashing to cure and dry before installation of windows and rest of wall assembly, including TYPAR® WRB or other air barrier.

Check TYPAR Liquid Flashing rough opening installation to ensure it is free from pinholes or voids. Cover any pinholes or voids with TYPAR Liquid Flashing, as needed.

Follow manufacturer's installation instructions for proper installation of windows, WRB, and air barrier, as needed.

Liquid Flashing Cured



STEP 5

Install TYPAR WRB over an approved exterior sheathing and cut flush with outside perimeter around three sides of rough opening—the head and jambs. Cut the WRB 4" below the sill where the Liquid Flashing product has been applied.

WRB Installed Over Liquid Flashing



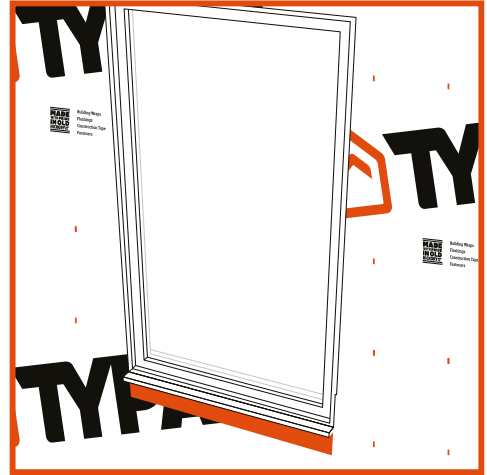
TYPAR® LIQUID FLASHING - INSTALLATION GUIDE

STEP 6

Once TYPAR® Liquid Flashing has cured and before installing window, as a best practice, apply a continuous bead of TYPAR® HD Sealant to interior window's mounting flange. Install window per manufacturer's instructions.



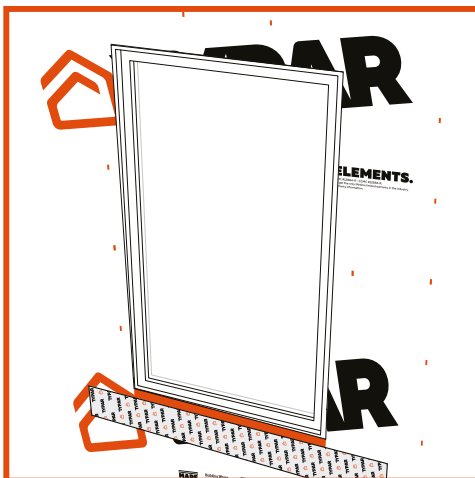
TYPAR HD Sealant Applied Around Perimeter of Rough Opening on WRB



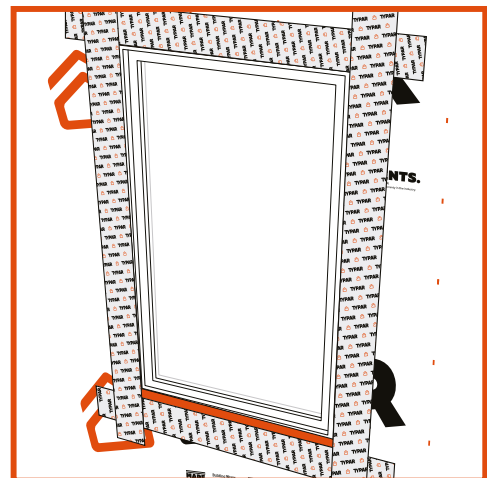
Window Set

STEP 7

Flash the jambs using TYPAR® Flashing (Clear Acrylic, All-Temperature, or Butyl). Apply flashing tape beneath the window sill flange, leaving a 1" gap of exposed liquid flashing between the flange and flashing. Cut two pieces of TYPAR Flashing long enough to extend 1" above the window head flange and 1" below the window sill flange. Carefully peel off the release liner and apply the flashing on both sides of the window. Flash the window head flange on either side with TYPAR Flashing, ensuring that flashing is cut 12" longer than the window head rough opening and runs at least 6" onto TYPAR Flashing along the jambs. Flip down the flap of TYPAR® WRB and tape the 45° WRB cuts with TYPAR® Construction Tape.



Sill Flashing Applied



Jamb & Head Flashing Applied



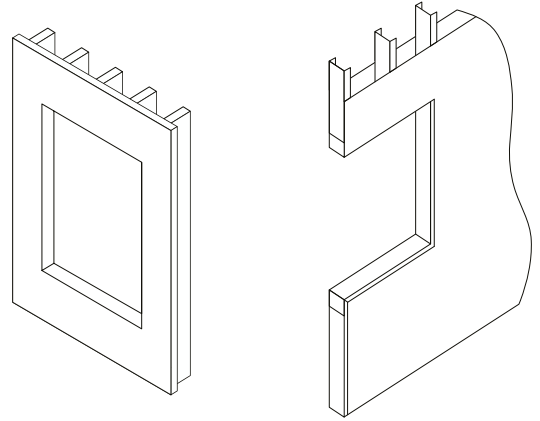
ROUGH OPENING INSTALLATION

OPTION 3: FULL WINDOW ROUGH OPENING WITH HEADER WRAP SKIRT

STEP 1

Inspect rough opening and ensure it is smooth, clean, and dry. Remove all visible contaminants and debris. Tap in any protruding nails and fill any gaps with TYPAR® Liquid Flashing and let set.

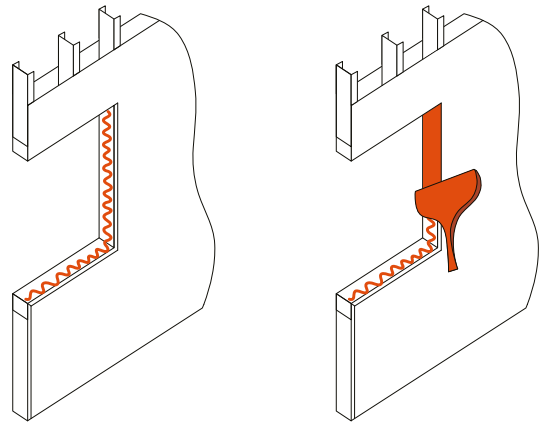
Rough
Opened
Cleaned



STEP 2

Starting at the top of the rough opening, apply a bead of TYPAR Liquid Flashing in the rough opening to be sealed and spread the material using a trowel, putty knife, or other spreader tool across the rough opening surface at an even consistency.

Liquid Flashing
Applied to Rough
Opening



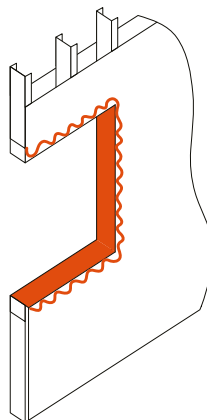
Test the thickness of the material and ensure that it has a thickness of 12-15 mils using a wet mil gauge.

STEP 3

Apply a thick bead of TYPAR Liquid Flashing to the vertical surface around the rough opening.

Spread using a trowel, putty knife, or other spreader tool across and into the rough opening surface, integrating with previously applied Liquid Flashing, at an even consistency.

Liquid Flashing
Applied Around
Perimeter of
Rough Opening



Test with wet mil gauge and ensure 12-15 mil thickness is achieved. Ensure at least a 4" overlap with gypsum board or WRB around entire rough opening.



TYPAR® LIQUID FLASHING - INSTALLATION GUIDE

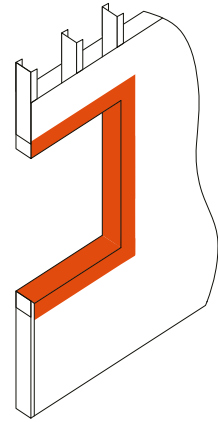
STEP 4

Allow TYPAR® Liquid Flashing to cure and dry before installation of windows and rest of wall assembly, including TYPAR® WRB or other air barrier.

Check TYPAR Liquid Flashing rough opening installation to ensure it is free from pinholes or voids. Cover any pinholes or voids with TYPAR Liquid Flashing, as needed.

Follow manufacturer's installation instructions for proper installation of windows, WRB, and air barrier, as needed.

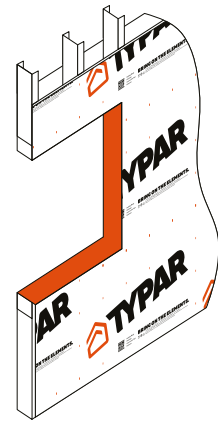
Liquid Flashing Cured



STEP 5

Install TYPAR WRB over an approved exterior sheathing and cut flush with outside Liquid Flashing perimeter around all four sides of rough opening.

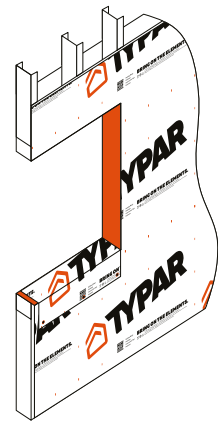
WRB Installed Over Liquid Flashing



STEP 6

Install a 12" TYPAR® Header Wrap Skirt across the bottom of the rough opening covering the already installed Liquid Flashing, and extending 1"-2" beyond the jambs on either side of rough opening. Plastic cap fasteners or staples are acceptable to fasten the skirt.

WRB Header Skirt Applied Over Liquid Flashing



TYPAR® LIQUID FLASHING - INSTALLATION GUIDE

STEP 7

Once TYPAR® Liquid Flashing has cured and before installing window, apply a continuous bead of TYPAR® HD Sealant to interior window's mounting flange. Install window per manufacturer's instructions.



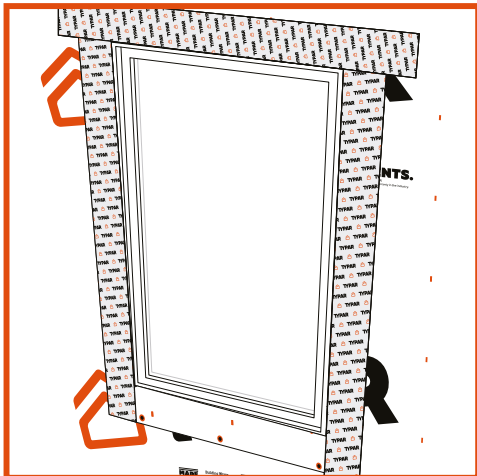
TYPAR HD Sealant Applied Around Perimeter of Rough Opening on WRB



Window Set

STEP 8

Flash the jambs using TYPAR® Flashing (Clear Acrylic, All-Temperature, or Butyl). Cut two pieces of TYPAR Flashing long enough to extend 1" above the window head flange and 1" below the window sill flange. Carefully peel off the release liner and apply the flashing on both sides of the window. Flash the window head flange on either side with TYPAR Flashing, ensuring that flashing is cut 12" longer than the window head rough opening and runs at least 6" onto TYPAR Flashing along the jambs.



Jamb & Head Flashing Applied



JOINT DETAILING & SEAMING

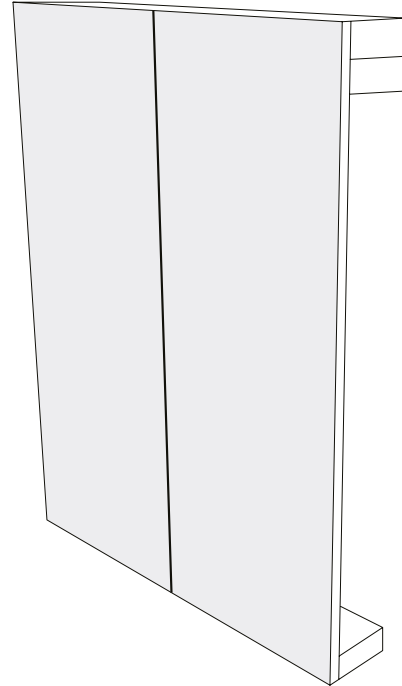
DISCLAIMER

TYPAR® Liquid Flashing is compatible with all major structural, sheathing, and gypsum panel boards and can be used as an alternative to self-adhered flashing tape to seam panels together.

STEP 1

Inspect panel boards and ensure they are smooth, clean, and dry. Remove all visible contaminants and debris.

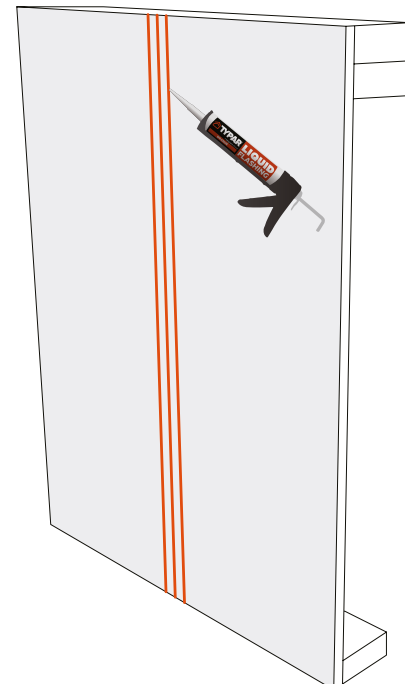
Panel Boards
Cleaned



STEP 2

Apply TYPAR Liquid Flashing into Panel Joint. Apply bead of TYPAR Liquid Flashing on either side of panel seam running entirety of length of panel.

TYPAR Liquid
Flashing Seams

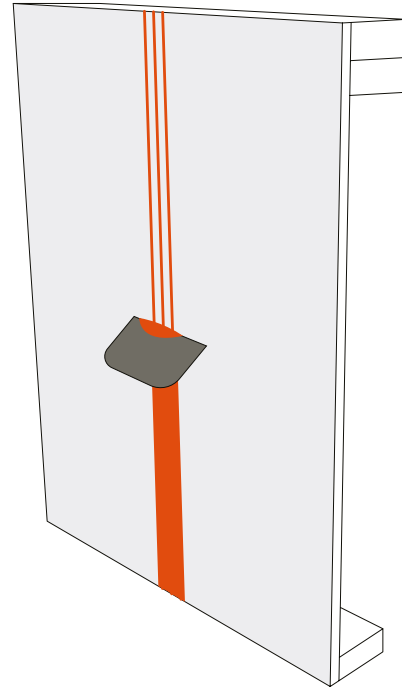


TYPAR® LIQUID FLASHING - INSTALLATION GUIDE

STEP 3

Spread TYPAR® Liquid Flashing using trowel, putty knife, or other spreader. Ensure at least 1" of TYPAR Liquid Flashing has been applied on either side of panel seam and into panel joint.

Panel Boards
Cleaned



*See the TYPAR® Lifetime Limited Warranty located online at [TYPAR.com/downloads](https://www.typar.com/downloads) for full details.

March 2026 | © 2026, Magnera Corporation.

70 Old Hickory Blvd, Old Hickory, TN 37138

TYPAR® is a registered trademark of Magnera Corporation, Inc. or one of its affiliates.

Please visit [TYPAR.com](https://www.typar.com) for installation instructions and warranty information.

Building Wraps | Flashings | Construction Tape | Sealant

