

TYPAR® DRAINABLEWRAP™ COMMERCIAL INSTALLATION GUIDE

FOR COMMERCIAL APPLICATIONS

TABLE OF CONTENTS

Table of Contents	01
Objective	01
Functions	01
Substrate	02
Weather Conditions	02
Overlaps	02
Penetrations	03
Terminators	03
Fasteners	03
Fastening Requirements	03
Windows and Doors	03
Completing the Installation	03

OBJECTIVE

The objective of these installation instructions for TYPAR® DrainableWrap™ Commercial is to provide guidance to the design professional and to the installation contractor. TYPAR DrainableWrap Commercial can provide the function of a water resistive barrier and the function of an air barrier in a commercial building when installed as an assembly.

Note: As commercial buildings vary significantly in design and height and are subject to different forces depending on location, the design professional shall determine the number of material loads needed for the project and review the guidelines in this document to ensure they are applicable to their specific project.

This guide provides only the basic installation requirements for TYPAR DrainableWrap Commercial and does not provide all details which may be required for a specific building. For additional guidance, design professionals may reference the TYPAR model specification guide or contact the manufacturer.

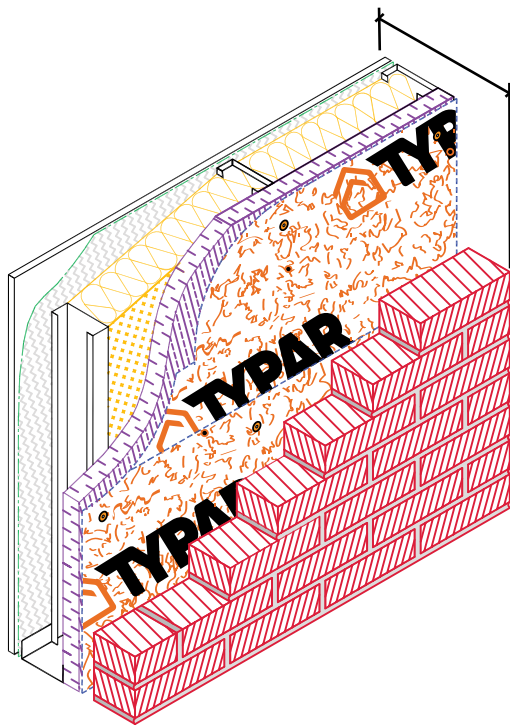
FUNCTIONS

Water Resistive Barrier Function

TYPAR DrainableWrap Commercial has been designed to shed the liquid water which passes through the cladding when installed as a water resistive barrier assembly. Additional materials and components shall be used to work with the TYPAR DrainableWrap Commercial to direct the water to the exterior of the building enclosure.

Air Barrier Assembly

Designed with an air permeance rate well below the maximum level required for classification as an air barrier material, TYPAR significantly reduces air infiltration and exfiltration through the walls of your building. Additional materials and components shall be used to seal the TYPAR DrainableWrap Commercial to penetrations and to terminate the material at the roof intersection and at the foundation. Both the design professional and the installer have to keep in mind that the force on the material will be in both directions (positive and negative). This load must still be transferred to the substrate. Therefore, the fastener type and spacing are very important.



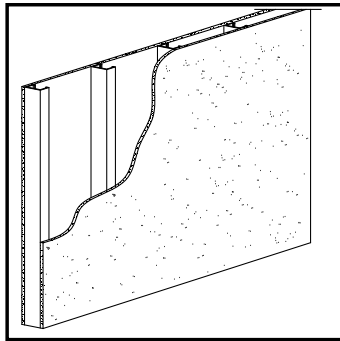
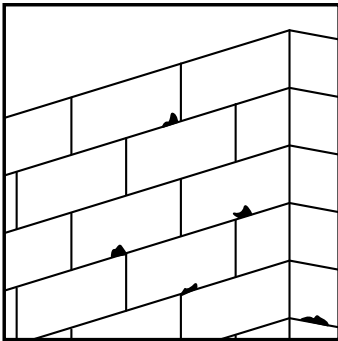
TYPICAL WALL MASONRY VENEER
 1" AIR SPACE TYPAR® METROWRAP RIGID INSULATION
 STEEL STUDS w/BATT INSULATION VAPOR RETARDER
 GYPSUM BOARD

TYPICAL WALL ISOMETRIC
 COMMERCIAL STEEL FRAME STRUCTURE w/MASONRY VENEER

INSTALLATION GUIDELINES

Substrate

TYPAR DrainableWrap Commercial can be installed over any substrate. Installers shall check for any sharp protrusions on the substrate and remove them to avoid penetrating the TYPAR DrainableWrap Commercial. The material must be intact to keep the water and air out.

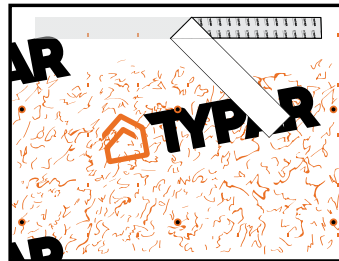


Weather Conditions

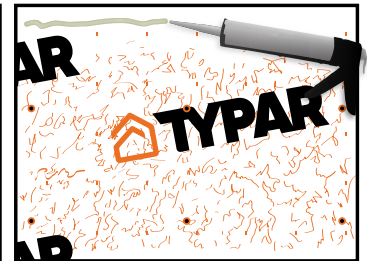
Temperature does not impact the installation procedure. High winds can affect installation as TYPAR DrainableWrap Commercial will be installed in large sheets. TYPAR DrainableWrap Commercial should not be installed when it is raining or before the substrate has dried after a rain.

Overlaps

TYPAR DrainableWrap Commercial and all other materials and components used as part of the installation are to be installed in a shingle fashion, the material or component above must overlap the material or component below it. The overlap shall be 6 inches (101 mm) both horizontally and vertically where possible. TYPAR DrainableWrap Commercial allows for either TYPAR Doubled Sided Seaming Tape or any polyurethane based caulking sealant to seam two overlapped rolls. When using TYPAR® Double Sided Seaming Tape, the tape should first be applied on the top edge of the TYPAR DrainableWrap Commercial within 6". The second layer of TYPAR DrainableWrap Commercial should then be applied on top of the first. When using any polyurethane-based caulking sealant, ensure a continuous bead of sealant is applied to top edge of the TYPAR DrainableWrap Commercial within 6" and then apply the second layer of TYPAR DrainableWrap Commercial on top of the first. Use of TYPAR® Construction Tape on horizontal and vertical seams is optional and not required for full warranty coverage under the TYPAR Weather Protection System Limited Lifetime Warranty.



Option 1: TYPAR Double Sided Tape



Option 2: Any Polyurethane-Based Caulking Sealant

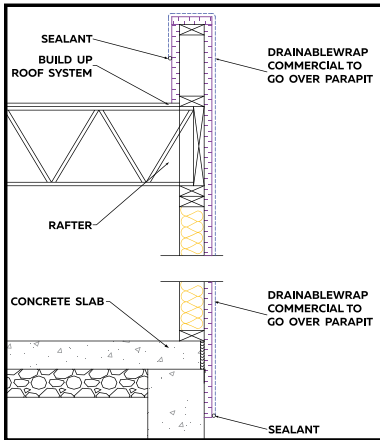


Penetrations

TYPAR® DrainableWrap Commercial must be carefully cut around penetrations. A bead of approved sealant is then installed on the substrate, approximately 1 inch (2.5 cm) back from the edge of the cut. The TYPAR DrainableWrap Commercial is then pressed into the sealant to keep out both water and air. TYPAR® Flexible Flashing or TYPAR straight flashing is then installed on the exterior of the TYPAR DrainableWrap Commercial, joining the material to the penetration. For more detailed information, refer to the TYPAR Installation Manual.

Terminations

Terminations are treated similar to penetrations. A bead of approved sealant is installed on the substrate approximately 1 to 2 inches (25 to 50 mm) back from the edge of the TYPAR DrainableWrap Commercial. The TYPAR DrainableWrap Commercial is pressed into the approved sealant. In high wind locations, consider installing a furring strip where the material is terminated to provide additional structural support.



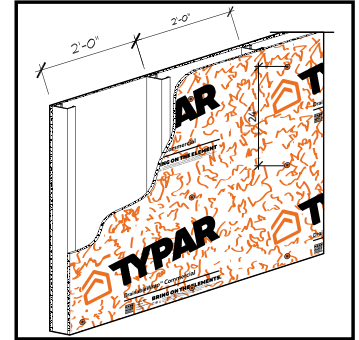
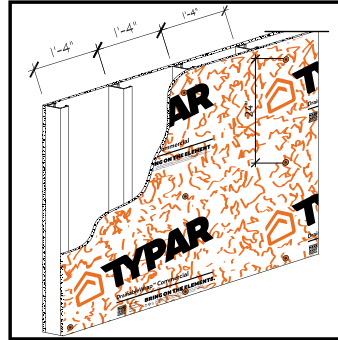
Fasteners

Different fasteners shall be used depending on the substrate poured (concrete, concrete block, steel stud, gypsum board, or wood). The most common walls used in commercial buildings are either steel studs with a treated gypsum board or wood framing with OSB sheathing. The fastener shall penetrate the substrate by 2 inches (50 mm) and shall have a 2 inch (50 mm) plastic head. When steel studs are used, the fasteners shall be self tapping screws with a 2 inch (50 mm) plastic washer. The screw shall

be 2 inches (50 mm) long when ½ inch (12 mm) gypsum board is used. When wood studs are used, a 2 inch (50 mm) plastic headed nail or screw shall be used which is 2 inches (50 mm) long when the ½ inch (12 mm) OSB sheathing is used. When the substrate is concrete block or poured concrete, use an adhesive approved by the manufacturer to adhere the TYPAR DrainableWrap Commercial to the substrate.

Fastening Requirements

Attach one fastener or more every 24 inches in horizontal and vertical direction.



Windows and Doors

Windows and doors are similar to penetrations. Installers will follow AAMA Procedure A or B depending on whether or not windows were installed prior to the installation of TYPAR DrainableWrap Commercial.

Completing the Installation

Once one section or wall is complete, the installer should inspect the installation to ensure the following:

- All rows of material are overlapping the row below
- All materials and components have been installed in a shingle fashion
- The proper fasteners are used
- Nailing patterns are correct
- Penetrations and terminations are correct
- Doors and windows have been properly flashed and integrated into the TYPAR DrainableWrap Commercial material

Disclaimer: This guideline document provides general guidance only for the installation of TYPAR® DrainableWrap Commercial on commercial buildings. The design professional or builder shall consider all of the physical properties of the material and design the installation requirements to suit specific building requirements. Failure to consider all specific requirements for a building may lead to improper use of the material, resulting in non-optimum performance of the material.

