

**TYPAR®**

**WOOD FRAMED WINDOW DETAILS**

**TABLE OF CONTENTS**

Table of Contents .....01

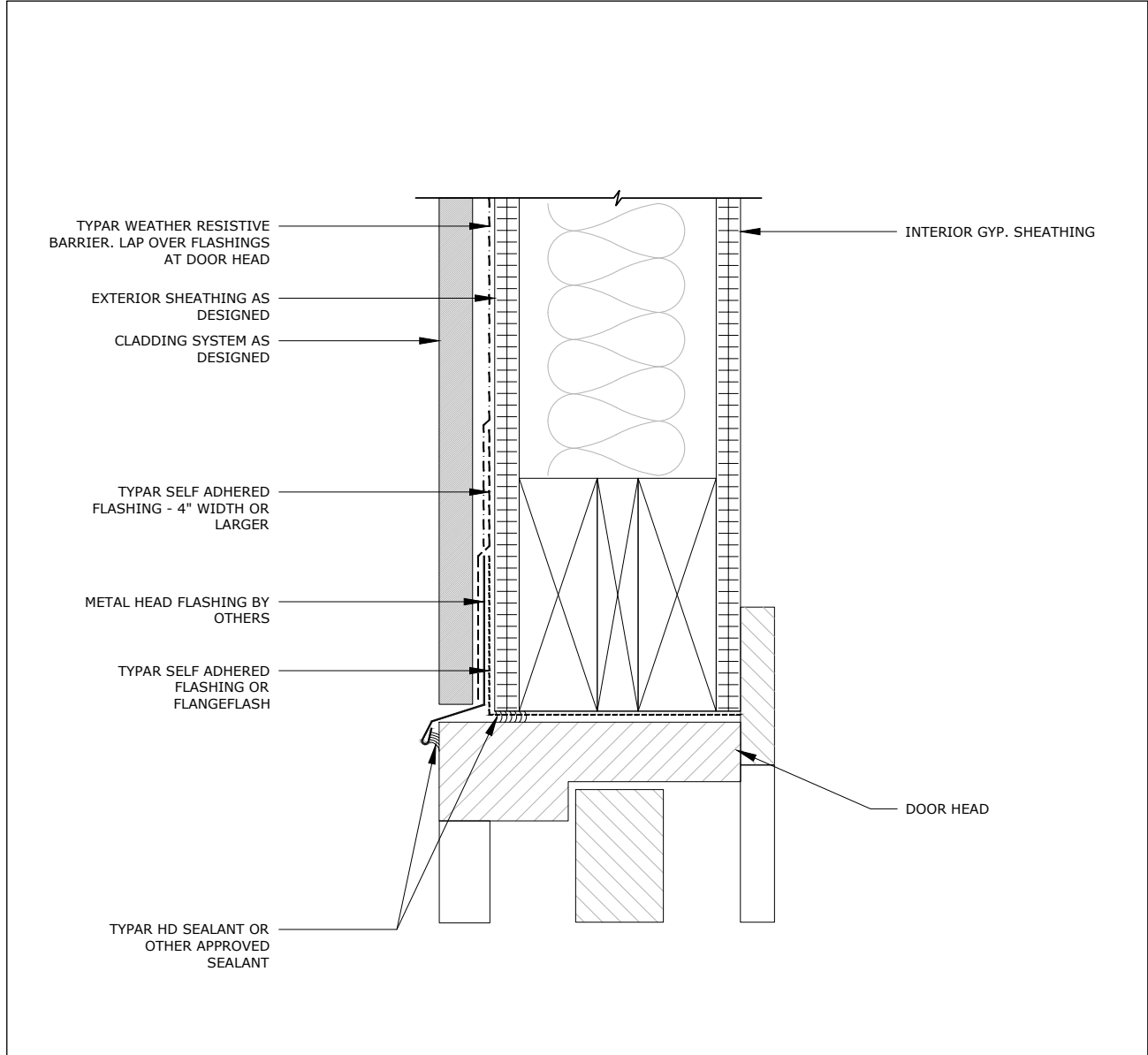
**Detail 3.1: Wood Framed Door Head at Generic Cladding .....02**

**Detail 3.2: Wood Framed Door Jamb at Generic Cladding.....03**

**Detail 3.3: Wood Framed Door Sill at Generic Cladding.....04**

# TYPAR® WOOD FRAMED WINDOW DETAILS

## DETAIL 3.1: WOOD FRAMED DOOR HEAD AT GENERIC CLADDING



### 3.1 WOOD FRAMED DOOR HEAD AT GENERIC CLADDING

- GENERAL NOTES:
- SECURE ALL WEATHER BARRIER LAPS AND SEAMS WITH TYPAR SEAM TAPE
  - SECURE WEATHER BARRIER WITH ONLY APPROVED FASTENERS
  - ADHERE TO ALL LOCAL LAWS, CODES, AND GOVERNING DESIGNS
  - INSTALL CLADDING SYSTEMS IN ACCORDANCE WITH LOCAL CODES, MANUFACTURER GUIDELINES, AND GOVERNING DESIGN REQUIREMENTS
  - ENSURE COMPATIBILITY WITH ADJACENT MATERIALS PRIOR TO INSTALLATION OF TYPAR PRODUCTS

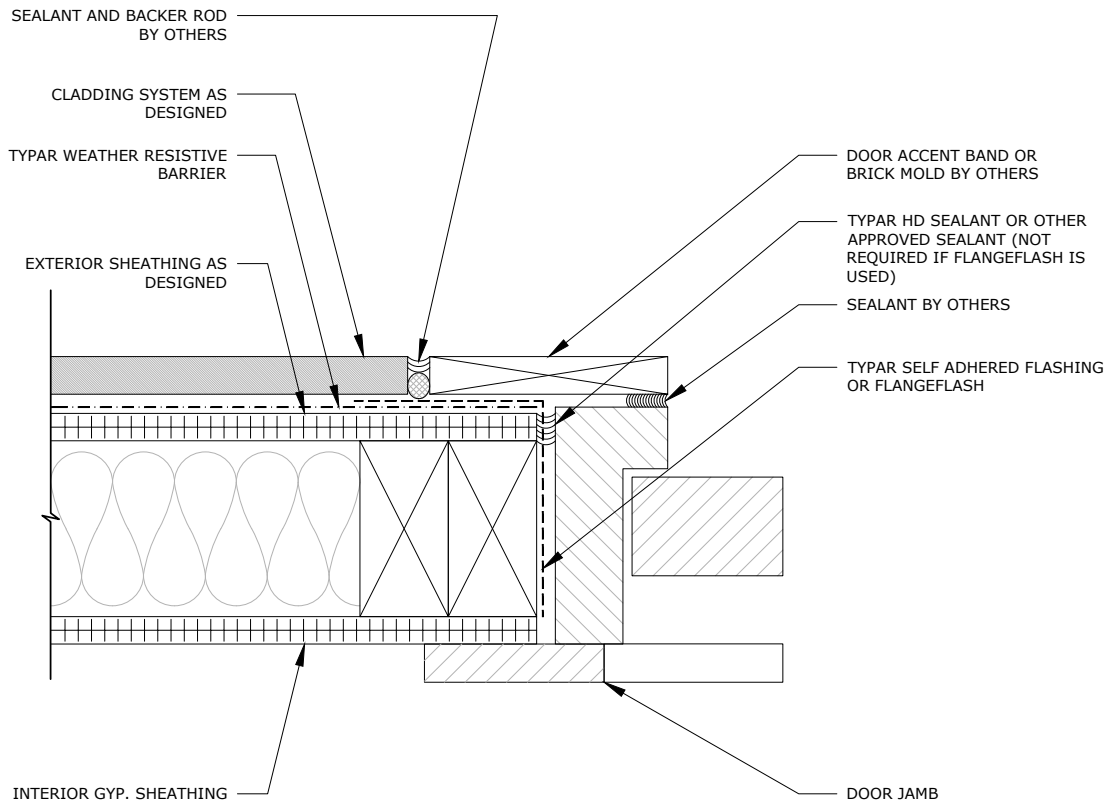


July 2025 | Made in the USA of U.S. and global components.  
 Please visit [TYPAR.com](http://TYPAR.com) for installation instructions and warranty information.  
 Building Wraps | Flashings | Construction Tape | Sealant

WATERPROOFING LEGEND (WHERE APPLICABLE)	
TYPAR WRB	-----
METAL FLASHING	=====
TYPAR FLASHING	-----
BUILDING PAPER	-----

# TYPAR® WOOD FRAMED WINDOW DETAILS

## DETAIL 3.2: WOOD FRAMED DOOR JAMB AT GENERIC CLADDING



### 3.2 WOOD FRAMED DOOR JAMB AT GENERIC CLADDING

- GENERAL NOTES:
- SECURE ALL WEATHER BARRIER LAPS AND SEAMS WITH TYPAR SEAM TAPE
  - SECURE WEATHER BARRIER WITH ONLY APPROVED FASTENERS
  - ADHERE TO ALL LOCAL LAWS, CODES, AND GOVERNING DESIGNS
  - INSTALL CLADDING SYSTEMS IN ACCORDANCE WITH LOCAL CODES, MANUFACTURER GUIDELINES, AND GOVERNING DESIGN REQUIREMENTS
  - ENSURE COMPATIBILITY WITH ADJACENT MATERIALS PRIOR TO INSTALLATION OF TYPAR PRODUCTS



A Magnera Brand

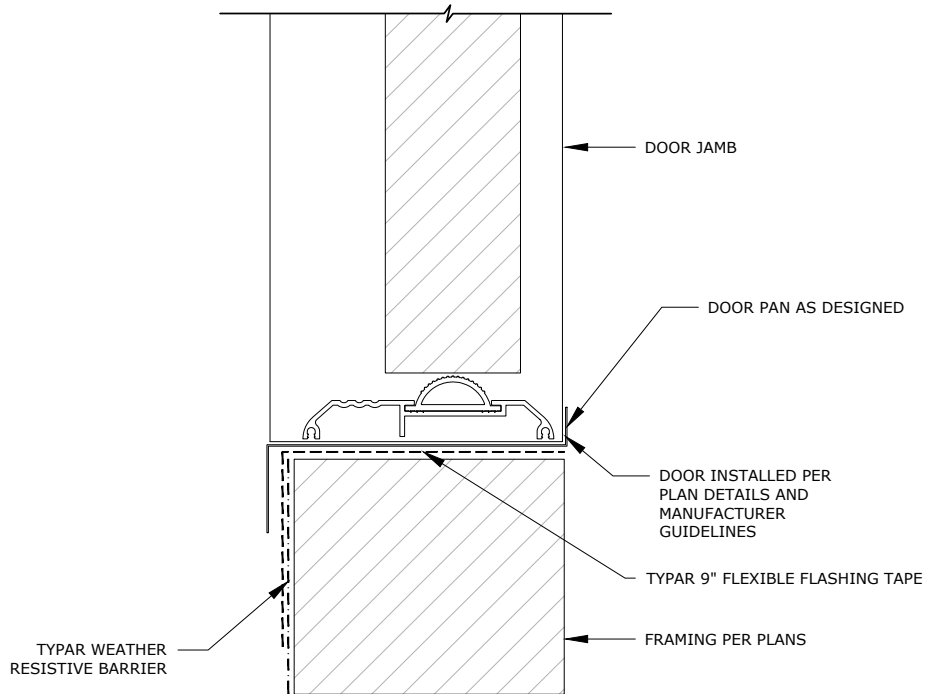


July 2025 | Made in the USA of U.S. and global components.  
Please visit [TYPAR.com](https://www.typar.com) for installation instructions and warranty information.  
Building Wraps | Flashings | Construction Tape | Sealant

WATERPROOFING LEGEND (WHERE APPLICABLE)	
TYPAR WRB	-----
METAL FLASHING	=====
TYPAR FLASHING	-----
BUILDING PAPER	-----

# TYPAR® WOOD FRAMED WINDOW DETAILS

## DETAIL 3.3: WOOD FRAMED DOOR SILL AT GENERIC CLADDING



### 3.3 WOOD FRAMED DOOR SILL AT GENERIC CLADDING

**GENERAL NOTES:**

- SECURE ALL WEATHER BARRIER LAPS AND SEAMS WITH TYPAR SEAM TAPE
- SECURE WEATHER BARRIER WITH ONLY APPROVED FASTENERS
- ADHERE TO ALL LOCAL LAWS, CODES, AND GOVERNING DESIGNS
- INSTALL CLADDING SYSTEMS IN ACCORDANCE WITH LOCAL CODES, MANUFACTURER GUIDELINES, AND GOVERNING DESIGN REQUIREMENTS
- ENSURE COMPATIBILITY WITH ADJACENT MATERIALS PRIOR TO INSTALLATION OF TYPAR PRODUCTS



A Magnera Brand



July 2025 | Made in the USA of U.S. and global components.  
Please visit [TYPAR.com](https://www.typar.com) for installation instructions and warranty information.  
Building Wraps | Flashings | Construction Tape | Sealant

**WATERPROOFING LEGEND  
(WHERE APPLICABLE)**

TYPAR WRB	-----
METAL FLASHING	=====
TYPAR FLASHING	-----
BUILDING PAPER	-----