

TYPAR®

WEATHER BARRIER DETAILS

TABLE OF CONTENTS

Table of Contents01

Detail 4.1: Fiber Cement to Masonry Flashing Transition02

Detail 4.2: Weather Barrier Termination at Parapet Head.....03

Detail 4.3: CMU to Framing Transition.....04

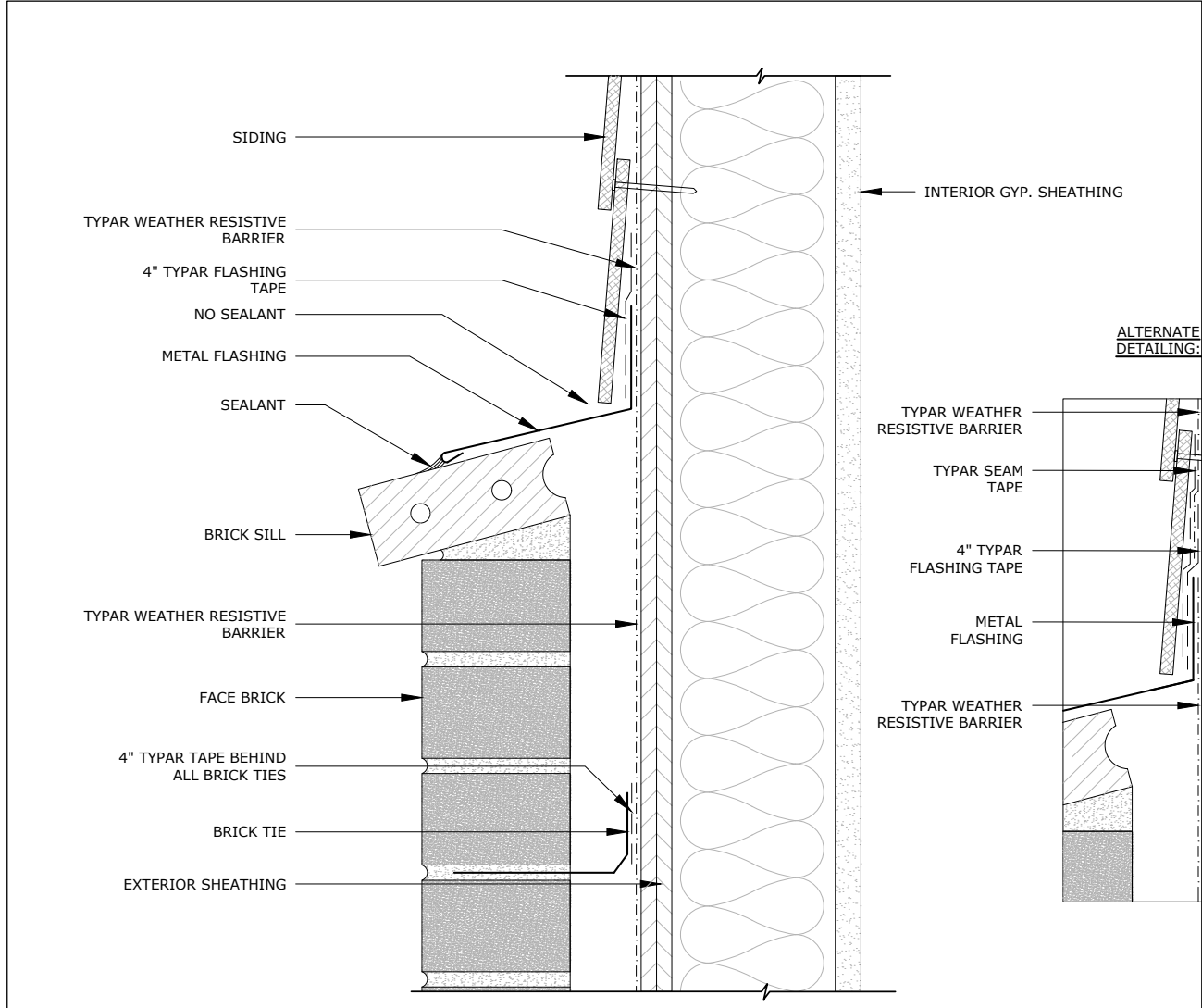
Detail 4.4: Wall Penetration.....05

Detail 4.5: Base of Wall Slab on Grade.....06

Detail 4.6: Weather Barrier Termination at Roof Eave.....07

TYPAR® WEATHER BARRIER DETAILS

DETAIL 4.1: FIBER CEMENT TO MASONRY FLASHING TRANSITION



4.1 FIBER CEMENT TO MASONRY FLASHING TRANSITION

- GENERAL NOTES:
- SECURE ALL WEATHER BARRIER LAPS AND SEAMS WITH TYPAR SEAM TAPE
 - SECURE WEATHER BARRIER WITH ONLY APPROVED FASTENERS
 - ADHERE TO ALL LOCAL LAWS, CODES, AND GOVERNING DESIGNS
 - INSTALL CLADDING SYSTEMS IN ACCORDANCE WITH LOCAL CODES, MANUFACTURER GUIDELINES, AND GOVERNING DESIGN REQUIREMENTS
 - ENSURE COMPATIBILITY WITH ADJACENT MATERIALS PRIOR TO INSTALLATION OF TYPAR PRODUCTS

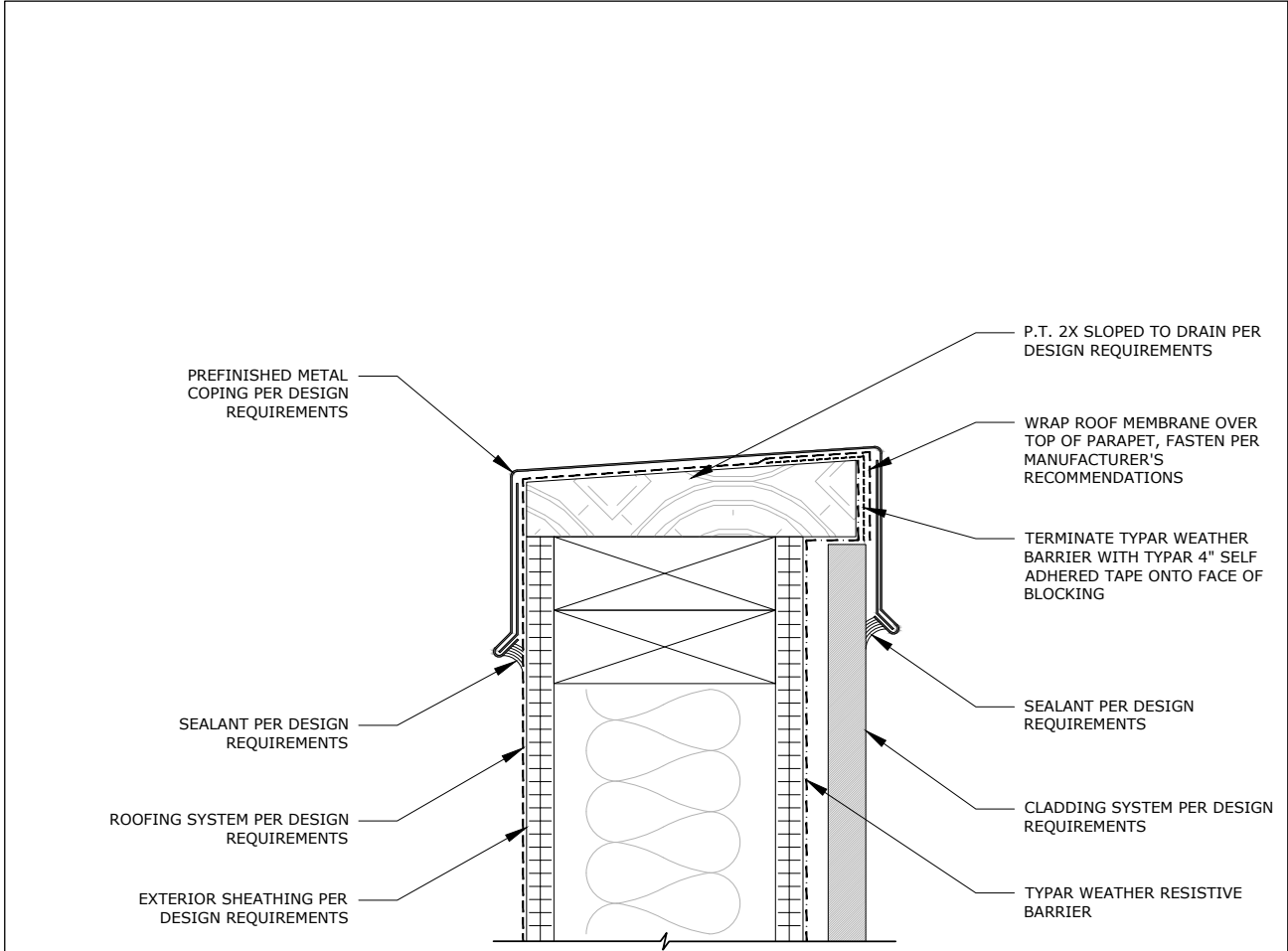


July 2025 | Made in the USA of U.S. and global components.
 Please visit TYPAR.com for installation instructions and warranty information.
 Building Wraps | Flashings | Construction Tape | Sealant

WATERPROOFING LEGEND (WHERE APPLICABLE)	
TYPAR WRB	-----
METAL FLASHING	=====
TYPAR FLASHING	-----
BUILDING PAPER	-----

TYPAR® WEATHER BARRIER DETAILS

DETAIL 4.2: WEATHER BARRIER TERMINATION AT PARAPET HEAD



4.2 WEATHER BARRIER TERMINATION AT PARAPET HEAD

- GENERAL NOTES:
- SECURE ALL WEATHER BARRIER LAPS AND SEAMS WITH TYPAR SEAM TAPE
 - SECURE WEATHER BARRIER WITH ONLY APPROVED FASTENERS
 - ADHERE TO ALL LOCAL LAWS, CODES, AND GOVERNING DESIGNS
 - INSTALL CLADDING SYSTEMS IN ACCORDANCE WITH LOCAL CODES, MANUFACTURER GUIDELINES, AND GOVERNING DESIGN REQUIREMENTS
 - ENSURE COMPATIBILITY WITH ADJACENT MATERIALS PRIOR TO INSTALLATION OF TYPAR PRODUCTS

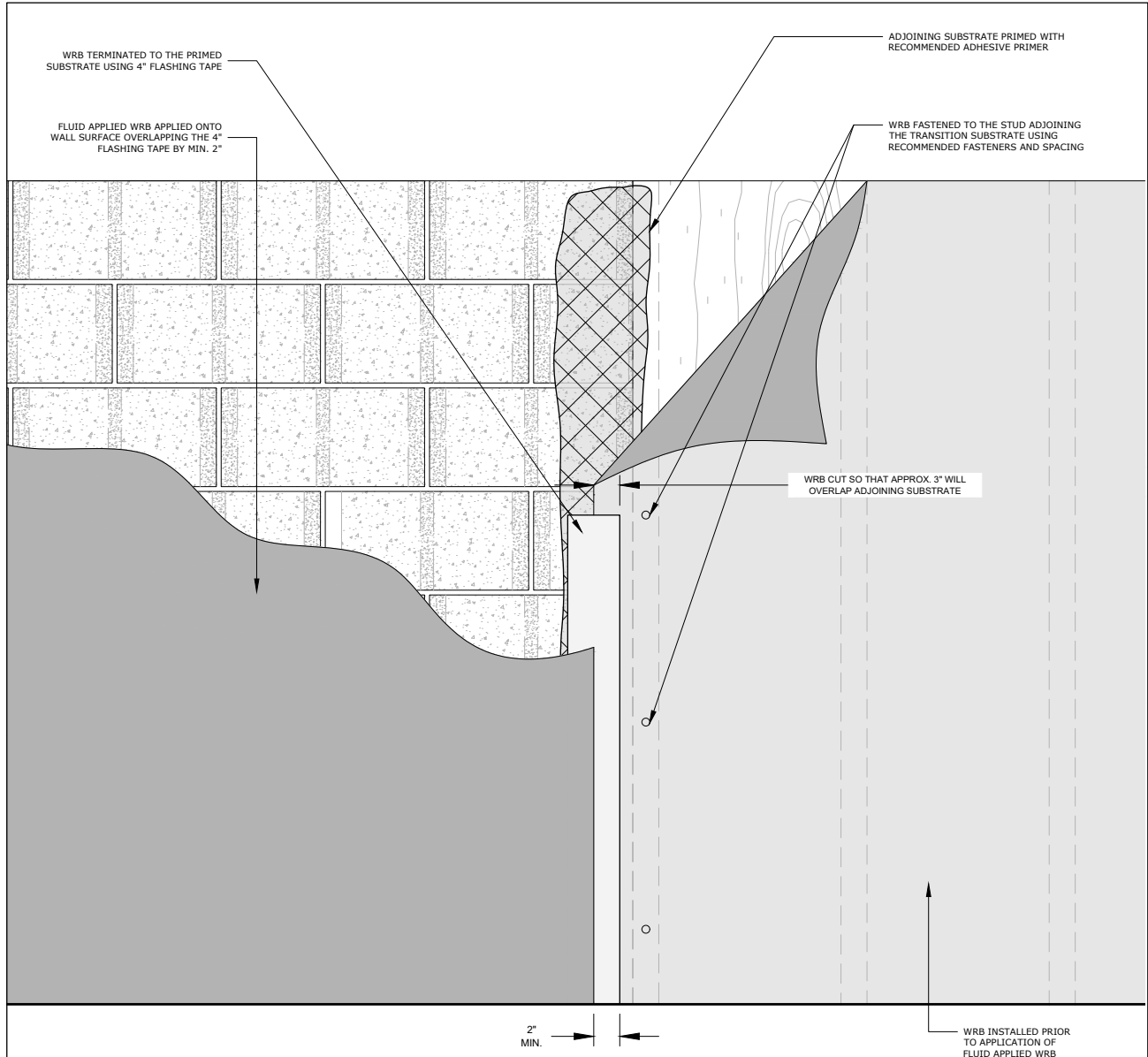


July 2025 | Made in the USA of U.S. and global components.
 Please visit TYPAR.com for installation instructions and warranty information.
 Building Wraps | Flashings | Construction Tape | Sealant

WATERPROOFING LEGEND (WHERE APPLICABLE)	
TYPAR WRB	-----
METAL FLASHING	=====
TYPAR FLASHING	-----
BUILDING PAPER	-----

TYPAR® WEATHER BARRIER DETAILS

DETAIL 4.3: CMU TO FRAMING TRANSITION



4.3 CMU TO FRAMING TRANSITION

- GENERAL NOTES:
- SECURE ALL WEATHER BARRIER LAPS AND SEAMS WITH TYPAR SEAM TAPE
 - SECURE WEATHER BARRIER WITH ONLY APPROVED FASTENERS
 - ADHERE TO ALL LOCAL LAWS, CODES, AND GOVERNING DESIGNS
 - INSTALL CLADDING SYSTEMS IN ACCORDANCE WITH LOCAL CODES, MANUFACTURER GUIDELINES, AND GOVERNING DESIGN REQUIREMENTS
 - ENSURE COMPATIBILITY WITH ADJACENT MATERIALS PRIOR TO INSTALLATION OF TYPAR PRODUCTS

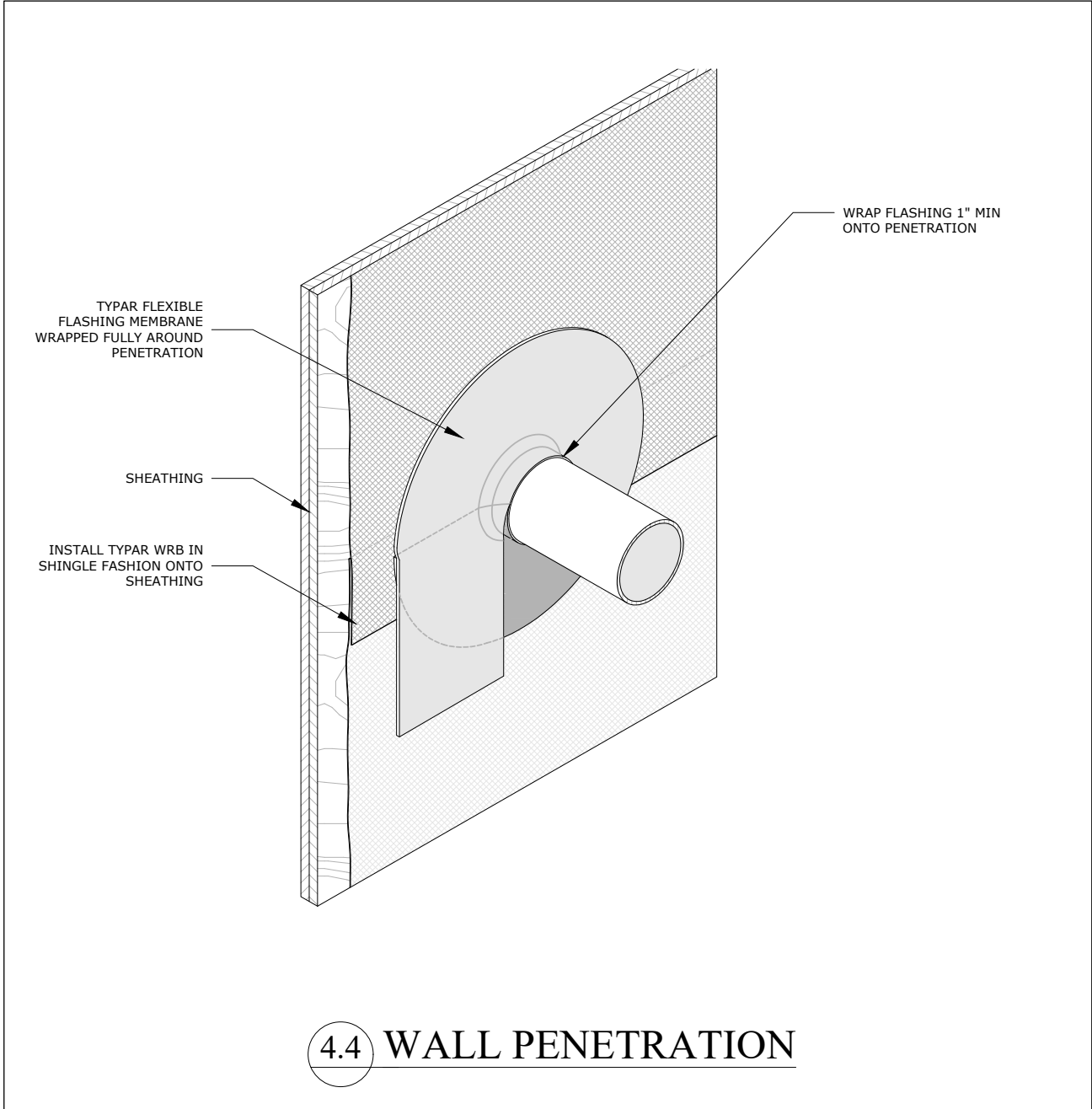


July 2025 | Made in the USA of U.S. and global components.
 Please visit TYPAR.com for installation instructions and warranty information.
 Building Wraps | Flashings | Construction Tape | Sealant

WATERPROOFING LEGEND (WHERE APPLICABLE)	
TYPAR WRB	-----
METAL FLASHING	=====
TYPAR FLASHING	-----
BUILDING PAPER	-----

TYPAR® WEATHER BARRIER DETAILS

DETAIL 4.4: WALL PENETRATION



- GENERAL NOTES:**
- SECURE ALL WEATHER BARRIER LAPS AND SEAMS WITH TYPAR SEAM TAPE
 - SECURE WEATHER BARRIER WITH ONLY APPROVED FASTENERS
 - ADHERE TO ALL LOCAL LAWS, CODES, AND GOVERNING DESIGNS
 - INSTALL CLADDING SYSTEMS IN ACCORDANCE WITH LOCAL CODES, MANUFACTURER GUIDELINES, AND GOVERNING DESIGN REQUIREMENTS
 - ENSURE COMPATIBILITY WITH ADJACENT MATERIALS PRIOR TO INSTALLATION OF TYPAR PRODUCTS

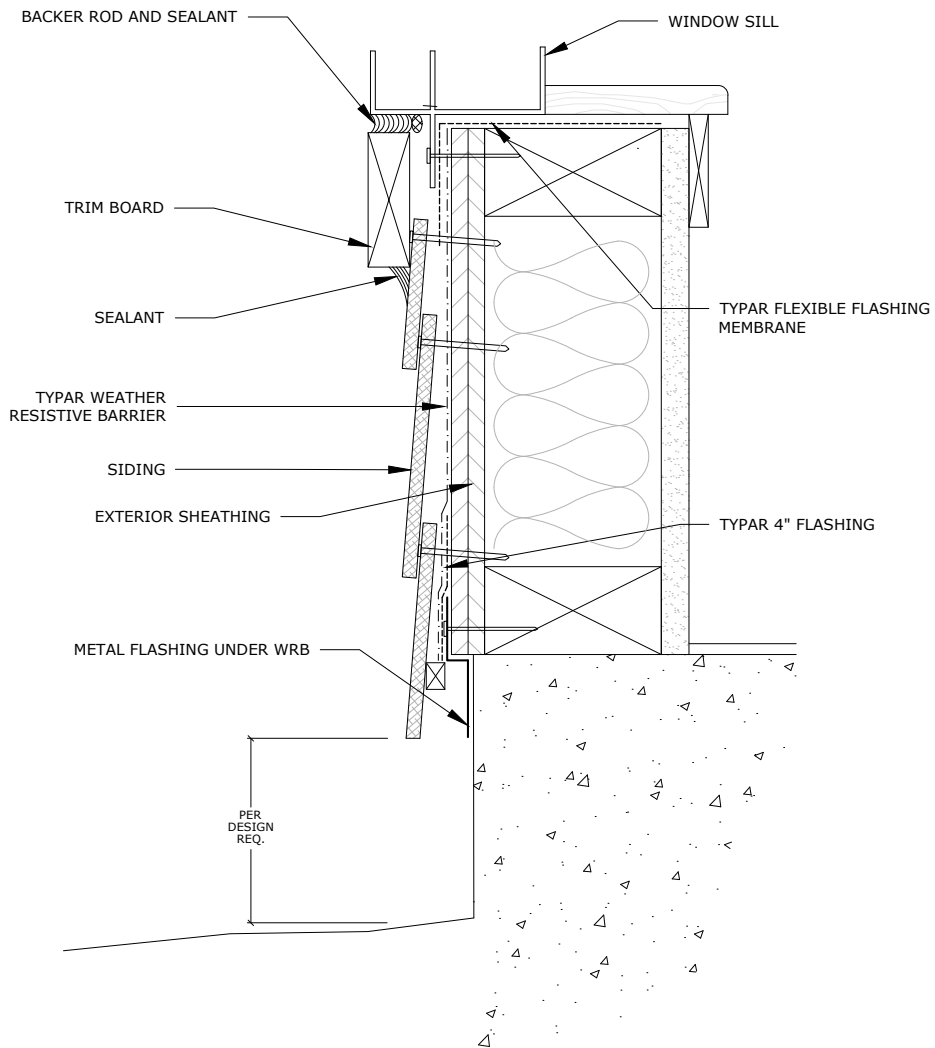


July 2025 | Made in the USA of U.S. and global components.
 Please visit TYPAR.com for installation instructions and warranty information.
 Building Wraps | Flashings | Construction Tape | Sealant

WATERPROOFING LEGEND (WHERE APPLICABLE)	
TYPAR WRB	-----
METAL FLASHING	=====
TYPAR FLASHING	-----
BUILDING PAPER	-----

TYPAR® WEATHER BARRIER DETAILS

DETAIL 4.5: BASE OF WALL SLAB ON GRADE



4.5 BASE OF WALL SLAB ON GRADE

GENERAL NOTES:

- SECURE ALL WEATHER BARRIER LAPS AND SEAMS WITH TYPAR SEAM TAPE
- SECURE WEATHER BARRIER WITH ONLY APPROVED FASTENERS
- ADHERE TO ALL LOCAL LAWS, CODES, AND GOVERNING DESIGNS
- INSTALL CLADDING SYSTEMS IN ACCORDANCE WITH LOCAL CODES, MANUFACTURER GUIDELINES, AND GOVERNING DESIGN REQUIREMENTS
- ENSURE COMPATIBILITY WITH ADJACENT MATERIALS PRIOR TO INSTALLATION OF TYPAR PRODUCTS

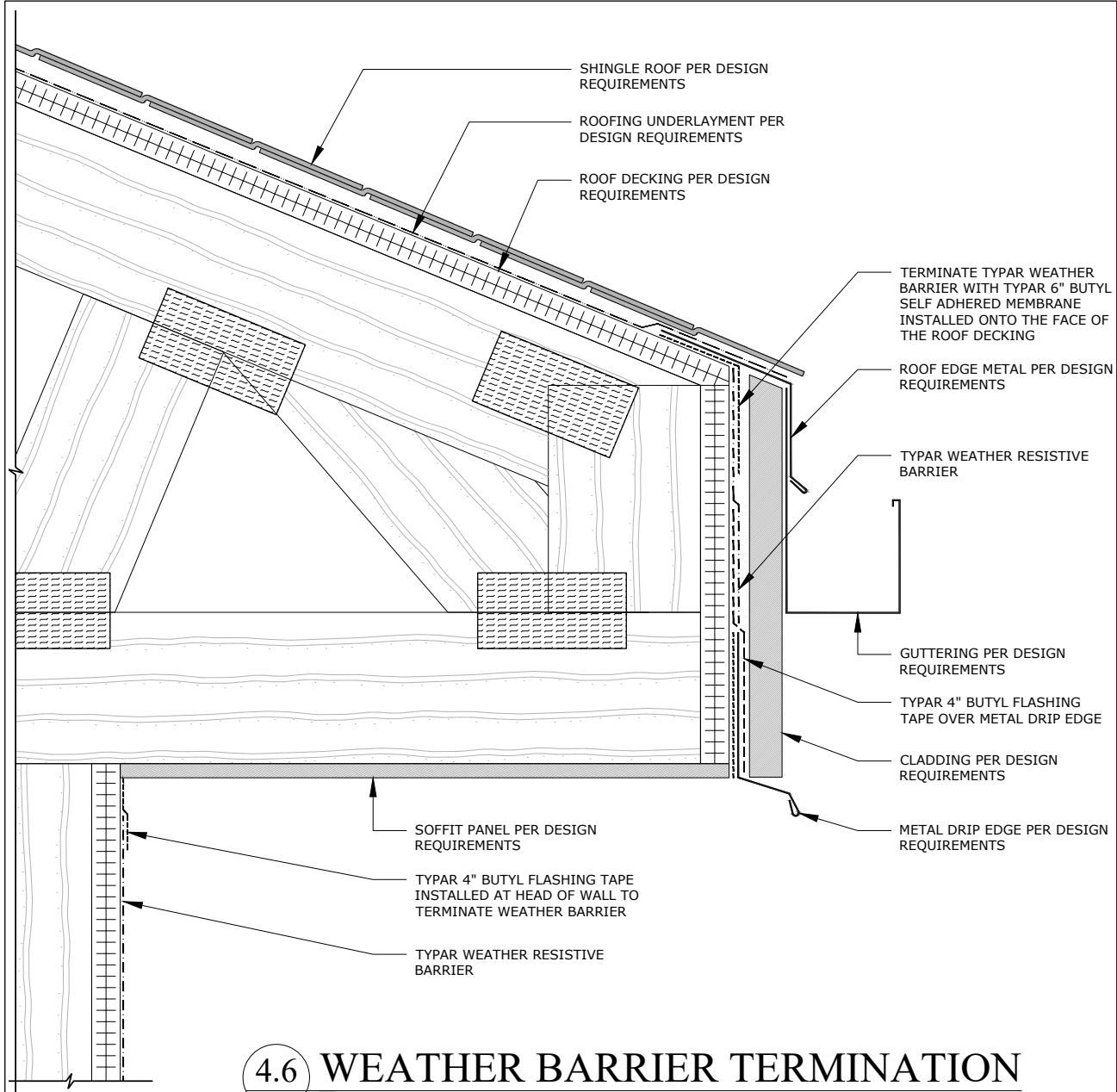


July 2025 | Made in the USA of U.S. and global components.
 Please visit [TYPAR.com](https://www.typar.com) for installation instructions and warranty information.
 Building Wraps | Flashings | Construction Tape | Sealant

WATERPROOFING LEGEND (WHERE APPLICABLE)	
TYPAR WRB	-----
METAL FLASHING	=====
TYPAR FLASHING	-----
BUILDING PAPER	-----

TYPAR® WEATHER BARRIER DETAILS

DETAIL 4.6: WEATHER BARRIER TERMINATION AT ROOF EAVE



4.6 WEATHER BARRIER TERMINATION AT ROOF EAVE

- GENERAL NOTES:
- SECURE ALL WEATHER BARRIER LAPS AND SEAMS WITH TYPAR SEAM TAPE
 - SECURE WEATHER BARRIER WITH ONLY APPROVED FASTENERS
 - ADHERE TO ALL LOCAL LAWS, CODES, AND GOVERNING DESIGNS
 - INSTALL CLADDING SYSTEMS IN ACCORDANCE WITH LOCAL CODES, MANUFACTURER GUIDELINES, AND GOVERNING DESIGN REQUIREMENTS
 - ENSURE COMPATIBILITY WITH ADJACENT MATERIALS PRIOR TO INSTALLATION OF TYPAR PRODUCTS



July 2025 | Made in the USA of U.S. and global components.
 Please visit TYPAR.com for installation instructions and warranty information.
 Building Wraps | Flashings | Construction Tape | Sealant

WATERPROOFING LEGEND (WHERE APPLICABLE)

TYPAR WRB	-----
METAL FLASHING	=====
TYPAR FLASHING	-----
BUILDING PAPER	-----