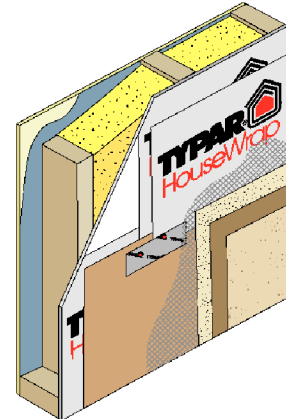


Typar Water – Resistive Barrier Installation Guidelines

In installing Typar WRB, the followings must be considered for the specific conditions,

STUCCO

When stucco is installed over wood-based sheeting the 2006 IBC (Section 2510.6) and the 2006 IRC (Section R-703.6.3) require “a water-resistive barrier with a performance at least equivalent to two layers of Grade D paper” or a layer of WRB which is separated from the stucco by an “intervening layer”. When Typar water resistive barrier is used behind stucco it should be separated from the stucco by second layer of Typar water resistive barrier, a layer of Grade D building paper or the Grade D paper backing of paper-backed lath.



Typar recommends that the installation of any material must first follow the local applicable building codes.

BRICK

The 2006 IRC (section R703.7.4.2) requires a min 1-inch (25mm) airspace separating the brick from the water –resistive barrier. The Brick Industry Association recommends a 1-inch (25mm) air space in front of wood stud construction and a 2-inch air space in front of steel stud construction. Typar WRB should be separated from the brick veneer by a minimum of 1-inch air space.

Typar recommends that the installation of any material must first follow the local applicable building codes.

STONE VENEER

The 2006 IBC (Section 1405.6) requires two layers of WRB behind stone. Over wood frame construction, Typar WRB should be installed behind stone the same way as installed behind stucco.

Typar recommends that the installation of any material must first follow the local applicable building codes.

WOOD SIDING

Typar WRB and wood siding must be installed according to the manufacturer’s instruction and the industry standards. Wood industry association recommends siding should be primed before installation.

Typar recommends that the installation of any material must first follow the local applicable building codes.