

TYPAR® HD SEALANT INSTALLATION GUIDE

PREPARATION

Before installing, ensure surface is free of all visual contaminants (dirt, dust, oil, mildew, paint, existing caulk). Ensure surfaces are clean and dry and do not apply if rain is expected in next 4-6 hours. Sealants should only be applied when surface and air temperatures are above 40° F. Do not apply on surfaces that exceed 140°F. TYPAR® HD Sealant is considered a non-priming sealant but it is the end user's responsibility to check adhesion of the cured sealant on typical test joints before and after application.

APPLICATION

STEP 1

Cut Nozzle or Tip at 30° to 45° angle for optimal joint protection. Ensure surface is clean, dry, and free of all visual contaminants. For larger gaps or U-shaped joints, use proper size backer rod or bond breaker tape. Follow manufacture installation instructions for proper fitness for use.

STEP 2

Insert cartridge into caulking gun and dispense 3/8" to 1/2" bead of sealant, ensuring pressure on end of caulking gun is consistent throughout entire bead. The size of bead will vary depending on the application. See TYPAR® HD Sealant Installation instructions for more specific details. The tooling time for TYPAR® HD Sealant is 15 minutes, and the tack- free time is 60 minutes.

STEP 3

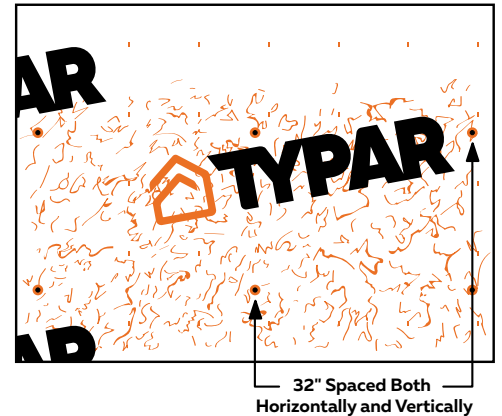
Remove any excess sealant with a clean rag or other disposal tool and water. A full cure will be achieved 24-72 hours after application depending on local weather conditions, temperature, and relative humidity.

SEAMING TYPAR® DRAINABLEWRAP WEATHER-RESISTANT BARRIER (WRB'S)

For Seaming TYPAR® DrainableWrap™ & TYPAR® DrainableWrap™ Commercial (approved alternative to TYPAR® Double-Sided Tape)

STEP 1

Start at the bottom of one end of the wall with the side without fiber facing up. When starting at a corner, overlap by a minimum of 12." Place the TYPAR® DrainableWrap™ or TYPAR® DrainableWrap™ Commercial roll horizontally and roll out the first course evenly, covering rough window and door openings. A minimum of a 1" (25.4 mm) overlap on the sill plate is required; however, for maximum protection, a 2-4" (51-102 mm) overlap on the sill plate is recommended. Pull the TYPAR® DrainableWrap™ or TYPAR® DrainableWrap™ Commercial snug and avoid wrinkles and creases. Ensure that the product is level.



STEP 2

Fasten the TYPAR® DrainableWrap™ or TYPAR® DrainableWrap™ Commercial to the stud using plastic-capped nails or plastic-capped staples at 32" on-center (OC), both horizontally and vertically.



STEP 3

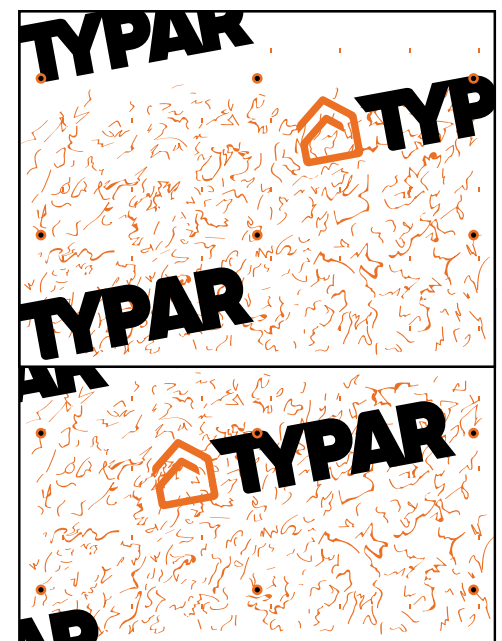
Apply one bead of minimum 1/2" TYPAR® HD Sealant on the top edge of the TYPAR® DrainableWrap™ or TYPAR® DrainableWrap™ Commercial within 6". Use of Euro, triangle, or other wider dispensing pattern nozzle for wider bead is acceptable.

STEP 4

Apply the second layer of TYPAR® DrainableWrap™ or TYPAR® DrainableWrap™ Commercial on top of the first.

STEP 5

The upper layer of TYPAR® DrainableWrap™ or TYPAR® DrainableWrap™ Commercial should overlap the bottom layer by a minimum of 6" (152 mm) vertically and horizontally. Ensure proper shingling throughout the installation to properly shed water.



STEP 6

After the installation is complete, and before the exterior cladding is installed, inspect the TYPAR® DrainableWrap™ or TYPAR® DrainableWrap™ Commercial for tears. Repair the issues with TYPAR® Construction Tape or TYPAR® Flashing.

FOR BASE OF WALL WRB SEALING

STEP 1

Ensure TYPAR® WRB overlaps foundation by a minimum of 1".

STEP 2

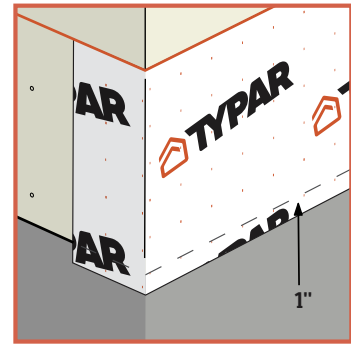
Using TYPAR® HD Sealant, apply at least a 3/8" bead to top of foundation wall.

STEP 3

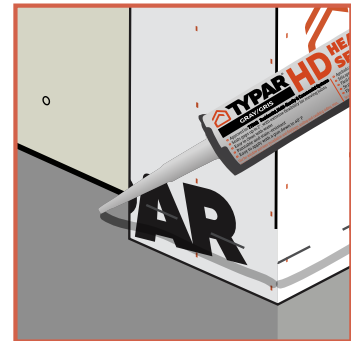
Overlap TYPAR® WRB over the foundation and into TYPAR® HD Sealant to seal.

STEP 4

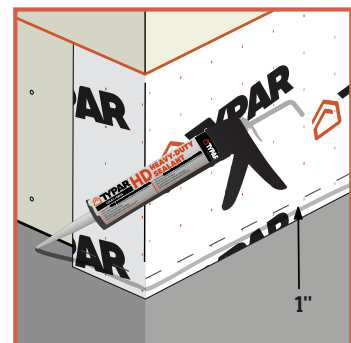
(Optional Step) Use J-roller, paddle, or other accessory for best adhesion between TYPAR® WRB and TYPAR® HD Sealant.



Ensure TYPAR® WRB overlaps foundation by a minimum of 1"



Using TYPAR® Heavy Duty HD Sealant, apply at least a 3/8" bead to top of foundation wall



Overlap TYPAR® WRB over the foundation and into TYPAR® Heavy Duty HD Sealant to seal

TYPAR® FLASHING DETAILS INSTALLING TYPAR® WRB BEFORE INTEGRAL FLANGED WINDOWS

STEP 1

Install the window sill pan according to the manufacturer's instructions. Alternatively, you can create a sill pan using TYPAR® Flexible Flashing. Cut a piece that is 12" longer than the length of the rough opening window sill. Carefully peel off the release liner. Place the flashing in the center of the rough opening and work your way toward the corners and then up the sides. Note: the flexible flashing should overlap to the outside of the wall by 2-3". Only stretch the flashing in the corners. Alternatively to above, you can create a sill pan by installing TYPAR® Straight Flashing along the bottom sill and installing TYPAR® Flexible Flashing on the corners only. If needed, secure the fanned edges of the TYPAR® Flexible Flashing with a plastic-capped nail or plastic-capped staple.

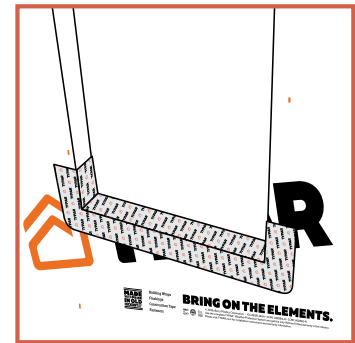
STEP 2

Apply at least a 3/8" continuous bead of TYPAR® HD Sealant to the back of the window or on the wall. Do not apply the TYPAR® HD Sealant sealant across the bottom of the sill or on the bottom of the window. This area is left open to allow for proper drainage. Install the window according to the manufacturer's installation instructions.

STEP 3

Cut two pieces of TYPAR® Flashing long enough to extend 1" above the window head flange and 1" below the window sill flange. Carefully peel off the release liner and apply the flashing on both sides of the window. Make sure to cover the entire window flange and press firmly either by hand or using a J-roller. Ensure there are no wrinkles or bubbles. Cut a piece of TYPAR® Flashing for the head flashing. Ensure that the piece is long enough to extend by 1" on both sides of the jamb flashing. Remove the release liner and carefully install the flashing. Cover the window flange and press firmly using a J-roller.

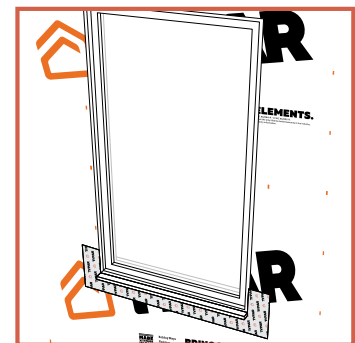
Release the upper flap of the TYPAR® WRB that you cut earlier. Tape the 45° cuts using TYPAR® Construction Tape or TYPAR® Flashing. DO NOT tape the WRB along the top of the window flange.



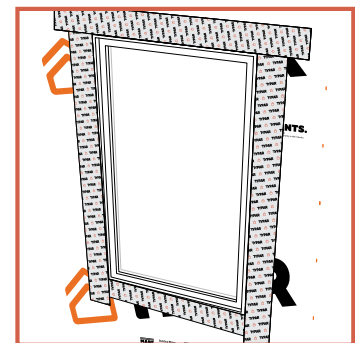
Flexible Flashing Installed at Sill



TYPAR HD Sealant Applied Around Window Perimeter



Window Set



Jam & Head Flashing Applied

DRIP CAP INSTALLATION

STEP 1

Apply a minimum 3/8" bead of TYPAR® HD Sealant to both sides of the drip cap. Install the drip cap against the window head flange; use pressure to ensure the drip cap is installed firmly in place.

Flash the drip cap and window head flange using TYPAR® Flashing. Ensure that the piece is long enough to extend by 1" on both sides of the head flashing and drip cap.

STEP 2

Flip down the flap of TYPAR® WRB and flash with TYPAR® Flashing; tape the 45° WRB cuts with TYPAR® Construction Tape.

STEP 3

Cut out TYPAR®, WRB making a square cut around the perimeter of the rough opening and a 45° angle cut for top corners. Temporarily fasten the 45° cuts using TYPAR® Construction Tape.

STEP 4

Install the sill flashing in accordance with the manufacturer's guidelines. Using TYPAR® HD Sealant, seam the corner pan flashings to the slab.

STEP 5

Flash the jambs using TYPAR® Flashing. Cut two pieces of TYPAR® Flashing long enough to extend 1" above the window head flange and 1" below the window sill flange. Carefully peel off the release liner and apply the flashing on both sides of the window.

STEP 6

Flash the window head flange on either side with TYPAR® Flexible Flashing, ensuring that flashing is cut 12" longer than the window head rough opening and runs at least 6" onto TYPAR® Flashing along the jambs (we flash both the top and bottom part of window before it is set).

STEP 7

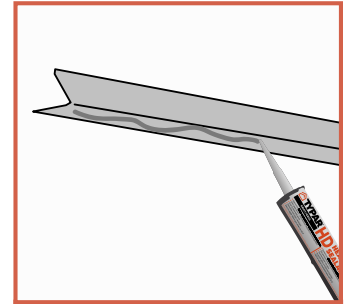
Apply at least a 3/8" continuous bead of TYPAR® HD Sealant to the three sides of the storefront window. Do not apply the TYPAR® HD Sealant across the bottom of the sill or on the bottom of the window, as this was previously flashed and sealed in step 2. Install the storefront window in accordance with the window manufacturer's installation instructions.

STEP 8

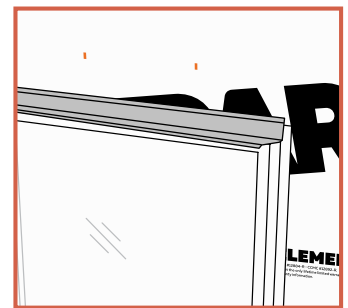
Flip down the flap of TYPAR® WRB and flash with TYPAR® Flashing; tape the 45° WRB cuts with TYPAR® Construction Tape.



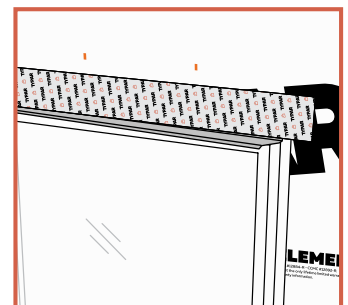
Sealant Applied to Head Flange



Drip Cap Set Onto Head Flange



Drip Cap Secured Into Place

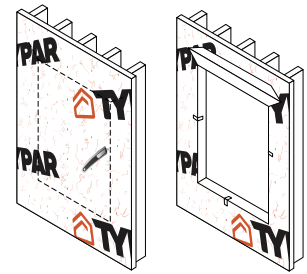


Head Flange Flashed

NON-FLANGED/STOREFRONT WINDOW OR DOOR TO SLAB

STEP 1

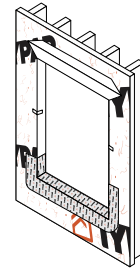
Cut out TYPAR® WRB, making a square cut around the perimeter of the rough opening and a 45° angle cut for the top corners. Temporarily fasten the 45° cuts using TYPAR® Construction Tape.



Rough Opening Prepared

STEP 2

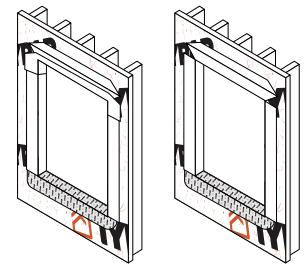
Install the sill flashing in accordance with the manufacturer's guidelines. Using TYPAR® HD Sealant, seam the corner pan flashings to the slab.



Flexible Flashing Applied at Sill

STEP 3

Flash the jambs using TYPAR® Flashing. Cut two pieces of TYPAR® Flashing long enough to extend 1" above the window head flange and 1" below the window sill flange. Carefully peel off the release liner and apply the flashing on both sides of the window.



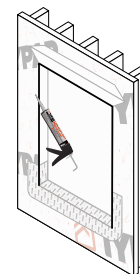
Jamb & Head Flashing Applied

STEP 4

Flash the window head flange on either side with TYPAR® Flexible Flashing, ensuring that the flashing is cut 12" longer than the window head rough opening and runs at least 6" onto TYPAR® Flashing along the jambs (we flash both top and bottom part of window before it is set).

STEP 5

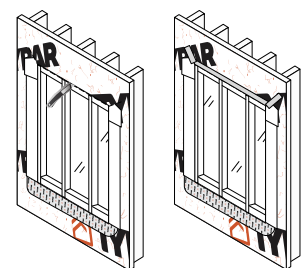
Apply at least a 3/8" continuous bead of TYPAR® HD Sealant to the three sides of the storefront window. Do not apply the TYPAR® HD Sealant across the bottom of the sill or on the bottom of the window, as this was previously flashed and sealed in step 2. Install the storefront window in accordance with the window manufacturer's installation instructions.



Sealant Applied, Storefront Window Set

STEP 6

Flip down the flap of TYPAR® WRB and flash with TYPAR® Flashing; tape the 45° WRB cuts with TYPAR® Construction Tape.



TYPAR® WRB Flipped Down & Flashed

DEEP RECESSED WINDOWS

Creating a 90° Corner with TYPAR® Flexible Flashing

STEP 1

Cut a 12" strip of TYPAR® Flexible Flashing.

STEP 2

Fold the Flexible Flashing in half first horizontally, then vertically, creating a square crease.

STEP 3

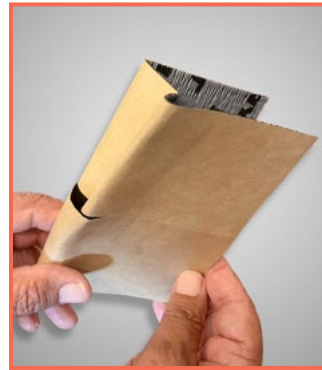
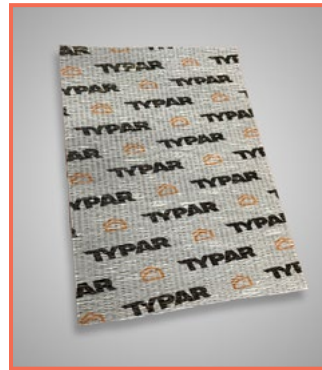
At the intersection of the creases, place your index finger and create a corner fold.

STEP 4

Crease the center fold, pressing firmly to create a sharp crease. Pressure is needed to ensure folds remain in the top sheet of the TYPAR® Flexible Flashing once the release paper is removed.

STEP 5

Once complete, you should have a 90° corner with TYPAR® Flexible Flashing, as depicted in step 5.



STEP 5A

Cut out TYPAR® WRB using a square cut around the perimeter of the rough opening and a 45° angle for the top corners. Temporarily fasten the 45° cuts using TYPAR® Construction Tape.

STEP 5B

Install TYPAR® Flexible Flashing at the sill.

1. Using TYPAR® Flexible Flashing, create a corner flashing for deep recessed windows.
2. Place the corner flashing into the corner of the recess, and adhere exposed butyl to the window frame.
3. Removing remaining release liner, adhere TYPAR® Flexible Flashing to sill and jambs of recess.
4. Stretch TYPAR® Flexible Flashing over the corner onto TYPAR® WRB, remove wrinkles and ensure 2-3" overlap.
5. Apply a bead of TYPAR® HD Sealant behind triangular flap and press down flap onto sealant to ensure it is secured in place.
6. Install TYPAR® Flashing at the sill. Cutting the flashing to the length of the sill, overlap the flashing at least 1" on sill and over WRB.
7. Install the window sill pan according to the manufacturer's instructions. Alternatively, you can create a sill pan using TYPAR® Flexible Flashing. Cut a piece that is 12" longer than the length of the rough opening window sill. Carefully peel off the release liner. Place the flashing in the center of the rough opening and work your way toward the corners and then up the sides. Note: the flexible flashing should overlap to the outside of the wall by 2-3". Only stretch the flashing in the corners.
8. Apply at least a 3/8" continuous bead of TYPAR® HD Sealant to the back of the window or on the wall on the (three) sides. Do not apply the TYPAR® HD Sealant sealant across the bottom of the sill or on the bottom of the window.
9. Install windows per manufacturer's guidelines.
10. Flash the jambs and head as per [TYPAR® Flashing Installation Guidelines](#).
11. Apply at least a 3/8" bead of TYPAR® HD Sealant (and backer rod if necessary) around window opening at the interior to ensure interior seal.

PARAPET WALL DETAIL WITH SEALANT (FOR MULTI-FAMILY & COMMERCIAL STRUCTURES)

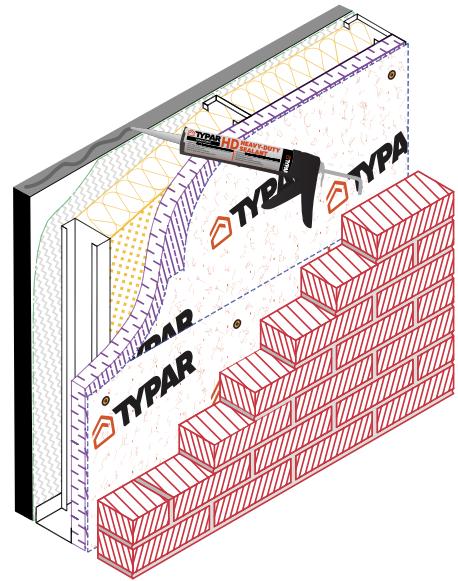
TYPAR® MetroWrap and TYPAR® DrainableWrap™ Commercial can be installed both horizontally and vertically without affecting performance. In this detail, TYPAR® Sealant replaces through-wall flashing and the TYPAR® MetroWrap is extended horizontally to the top of parapet wall onto the roofing membrane.

STEP 1

Apply 3/8" bead of TYPAR HD sealant to top of roofing membrane. Ensure bead of sealant is applied across the entirety of the roofing membrane where TYPAR® WRB will be applied over the top.

STEP 2

Extend TYPAR® MetroWrap or TYPAR® DrainableWrap™ Commercial over the top of the parapet wall, ensuring intersection with the roofing membrane. Press TYPAR® MetroWrap into TYPAR® HD Sealant to adhere to roofing membrane. Use J-roller for best adhesion results.



Parapet Wall - Sealant Applied
Over Roofing Membrane

